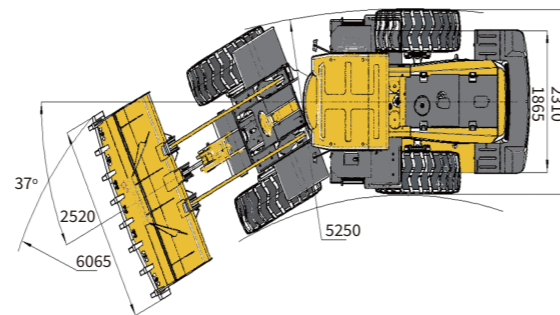
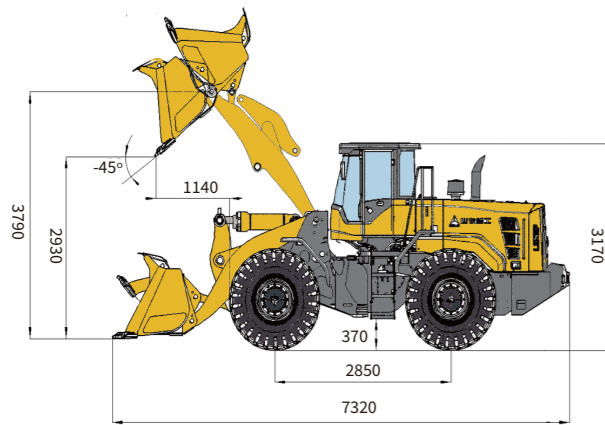


Main Parameter (Standard Equipment)

| Item | Specifications | Item | Specifications |
|-----------------------------------|-------------------------|--|----------------|
| Overall parameter | | Speed at FIII (km/h) | 0-27 |
| Operating weight (kg) | 10940 | Speed at FIV (km/h) | 0-41 |
| Rated load (kg) | 3500 | Speed at RI (km/h) | 0-10 |
| LxWxH (mm) | 7320x2520x3170 | Speed at RII (km/h) | 0-32 |
| Bucket capacity (m ³) | 2.1 | Hydraulic system of working device | |
| Max. tractive force (kN) | 100 | System pressure(Mpa) | 17.5 |
| Max. breakout force (kN) | ≥96 | Total cycle time(bucket lift&dump&fall)(s) | ≤9.2 |
| Tipping load (kN) | ≥70 | Steering system | |
| Engine | | System pressure(Mpa) | 14 |
| Rated power@speed(kW@r/min) | 105@2200 | Fill capacity | |
| Maximum torque@speed(Nm@r/min) | 560@(1300-1500) | Fuel (L) | 200 |
| Emission standard | GB 20891-2007 | Hydraulic oil (L) | 128 |
| Transmission system | | Engine (L) | 18 |
| Transmission type | Fixed shaft power shift | Transmission (L) | 45 |
| Gears | F4 & R2 | Drive axle (L) | 28+28 |
| Speed at FI (km/h) | 0-8 | Braking system (L) | 2 |
| Speed at FII (km/h) | 0-14 | | |



L935H WHEEL LOADER

Operation Weight: 10940 kg
Bucket capacity: 2.1 m³
Engine Power: 105 kW

Reliability in Action



EFQM
Congratulations SDLG for winning
EFQM Global Excellence Award
One of the top three quality awards in the world

PART OF VOLVO GROUP SINCE 2007

SDLG is member of the Volvo Group and one of the largest manufacturers of construction machinery in China, with a wide network of dealerships and service workshops throughout the world.

babcock

Babcock International Group [SDLG Authorised Dealer]

19 Taljaard Road, Bartlett, Boksburg, South Africa
Tel +27 (0) 11 230 7300 | enquiries babcock.co.za | www.babcock.co.za



L935H

Wheel Loader



HIGH EFFICIENCY

- Weichai Engine Tier 2/3, higher power to 105kW
- The energy-saving low-speed engine fits well with the high-efficiency and realizes a comprehensive energy saving of more than 10%
- 2nd generation engine body, more robust and can lengthen the maintenance period, reduce the operating cost



HIGH RELIABILITY

- Axis-Fixed power shift gearbox with high/low speed, F4/R2
- Easy operation, high reliability, convenient maintenance



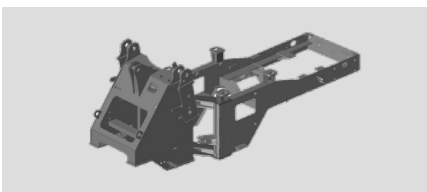
HEAVY-DUTY

- SDLG second generation enhanced driving axle is the best in performance, with large bearing capacity to meet the driving force and escape ability of bad conditions
- Stable and reliable performance, convenient operation and maintenance



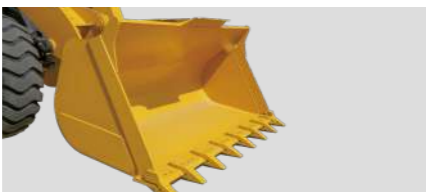
GREATER RELIABILITY

- Articulated frame with large turning angle and small turning radius, which increases the maneuverability of this machine
- Structures like frame and boom are optimized and enhanced, which largely increased the service life of the machine



GREATER LIFTING CAPACITY

- Rated load is improved to 3.5 ton, correspondingly the bucket volume is enlarged to 2.1m³, will give you higher return of investment
- Bucket is made of protruding type cutting board. The bottom antifriction plate is thickened, with little cutting resistance, increases 10% in load capacity, improves the working efficiency greatly



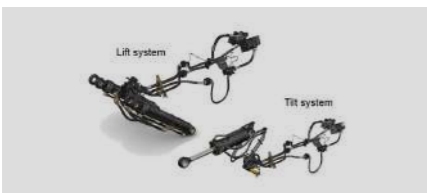
NEW APPEARANCE

- SDLG new H series appearance, including the new cab, new engine hood and counterweight which looks more powerful and beautiful



RELIABLE & EFFICIENT HYDRAULICS

- Optimize the design of working efficient hydraulic system
- Load sensing steering system provides easy and flexible steering operating experience
- Low-effort, pilot-operated joystick controls are designed to match your natural wrist and arm position for maximum comfort and minimum fatigue



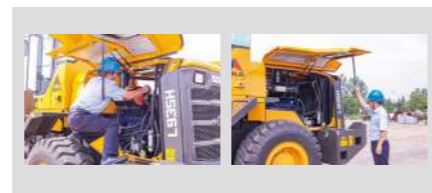
COMFORTABILITY

- Arc shape front glass, giving more operating spaces and good vision
- New H series cab, larger space, better sealing performance, more comfortable and low noise
- More air vents and new rock switch arrangement bring you new driving experience



SERVICEABILITY

- New Engine hood provides larger opening angle, enable the technician do the service and repair easily
- Side-opening type steel-made engine hood with large side door, which is easy to maintain. Oil filters, air filters are all arranged in one side, can do the maintenance at one stop



Standard Configurations

| | |
|---|--------------------------|
| Weichai WP6G140E22 | Sun Visor |
| BYD4208L Transmission | clothes-hook |
| SDLG enhanced axle | Moblie phone storage box |
| Single lever pilot control A | Air Pre-Filter |
| Load sensing full hydraulic steering | Front Wiper |
| 2.1m³ GP bucket with teeth | Work lights |
| New H series cab | Backing-up alarm |
| New rock switch B | 17.5-25-12PR Tire |
| Fresh air conditioning C | Engine Fan Guard |
| New digital combination instrument D | Power Switch |
| Centralized control box E | Tool box |
| Rearview mirror | Three-stage Fuel filter |
| Manual internal expansion shoe brake | |
| A/C | |



Optional Equipment

| | | |
|---------------------------------|--|------------------------------|
| Super high dump device A | Seat belt | Pallet fork G |
| 17.5-25-16PR block pattern tire | Air intake preheating | Snow Shovel |
| 17.5R25-12PR radial tire | License plate bracket | Rear View Camera |
| LED work lights B | Heater | Tire Chain |
| Rotating beacon | 1.5m³ Rock bucket D | Cold condition hydraulic oil |
| 3-spool combined main valve | 1.8m³-2.5m³ light material bucket E | |
| 3rd function connector C | Log grapple F | |



* The right of final interpretation of the abovementioned parameters shall be reserved by SDLG. No further notice will be given in case of any change. Illustrations in the text may not always be the standard illustrations for this model.