



643E | Mobile

SENEBOGEN

40 t TELESCOPIC MOBILE CRANE



129 kW



40 t



30 m



MULTI CAB

Stage V

643E

The all-rounder.

The 40 t telescopic mobile crane is a versatile all-rounder. With a load capacity of up to 40 t and a boom length of up to 43 m, the mobile crane covers almost all requirements for industrial and construction site applications.

Its powerful Full-Power Boom, which has also proven itself in the other products of the series, makes the SENNEBOGEN 643 E a guarantee for flexibility, especially in building construction and bridge construction.

Ultimate ease of use

With a sound-proofed, flexibly mounted and optionally elevating comfort Multi-cab.

On site and ready to use fast

Easy to transport, including ballast. To the construction site, unload – off you go.

Maintenance & service

This is made easy with standard components and easy-to-access maintenance and service points.

More flexibility

As the Full-Power Boom telescopes comfortably under load at any length and safely via the joystick.

More variety

Work optimally at all times with load hook, auxiliary jib, 6.5 m or 13 m fly jib. With the optional 13 m fly jib, boom lengths of up to 43 m are possible.

The 643 Mobile for lifting work in civil engineering; operation via radio remote control

Advanced. The E-series



LONG SERVICE LIFE, HIGH VALUE RETENTION

- Reliable and powerful thanks to its robust construction and high-quality components.

SOPHISTICATED, STATE-OF-THE-ART TECHNOLOGY

- In the 5th Generation – decades of experience in designing and constructing telescopic cranes

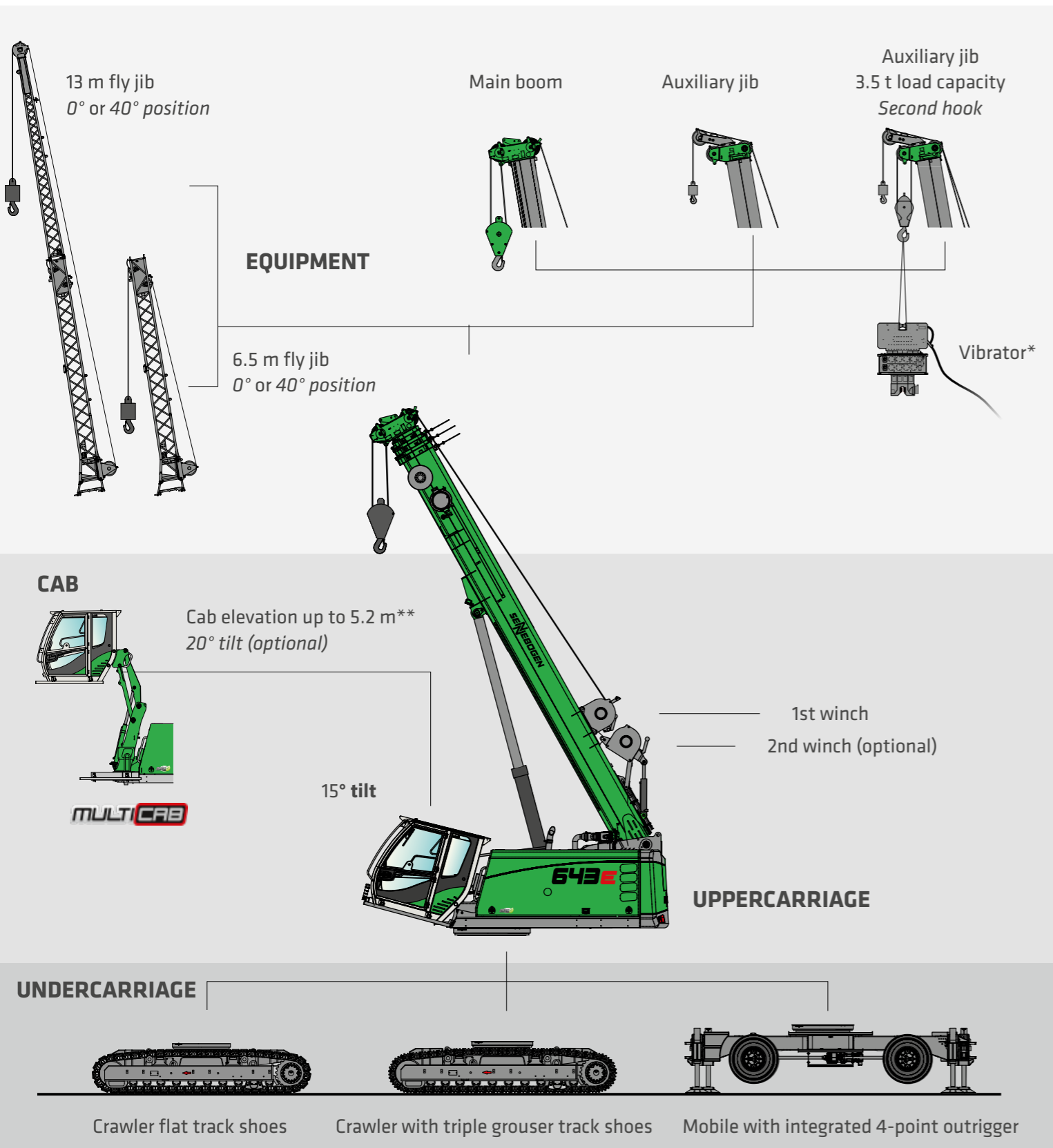
SIMPLE TO MAINTAIN AND SERVICE

- Technology that can be mastered and no over-engineering, easy access to all components

ENVIRONMENTALLY-FRIENDLY DRIVE TECHNOLOGY

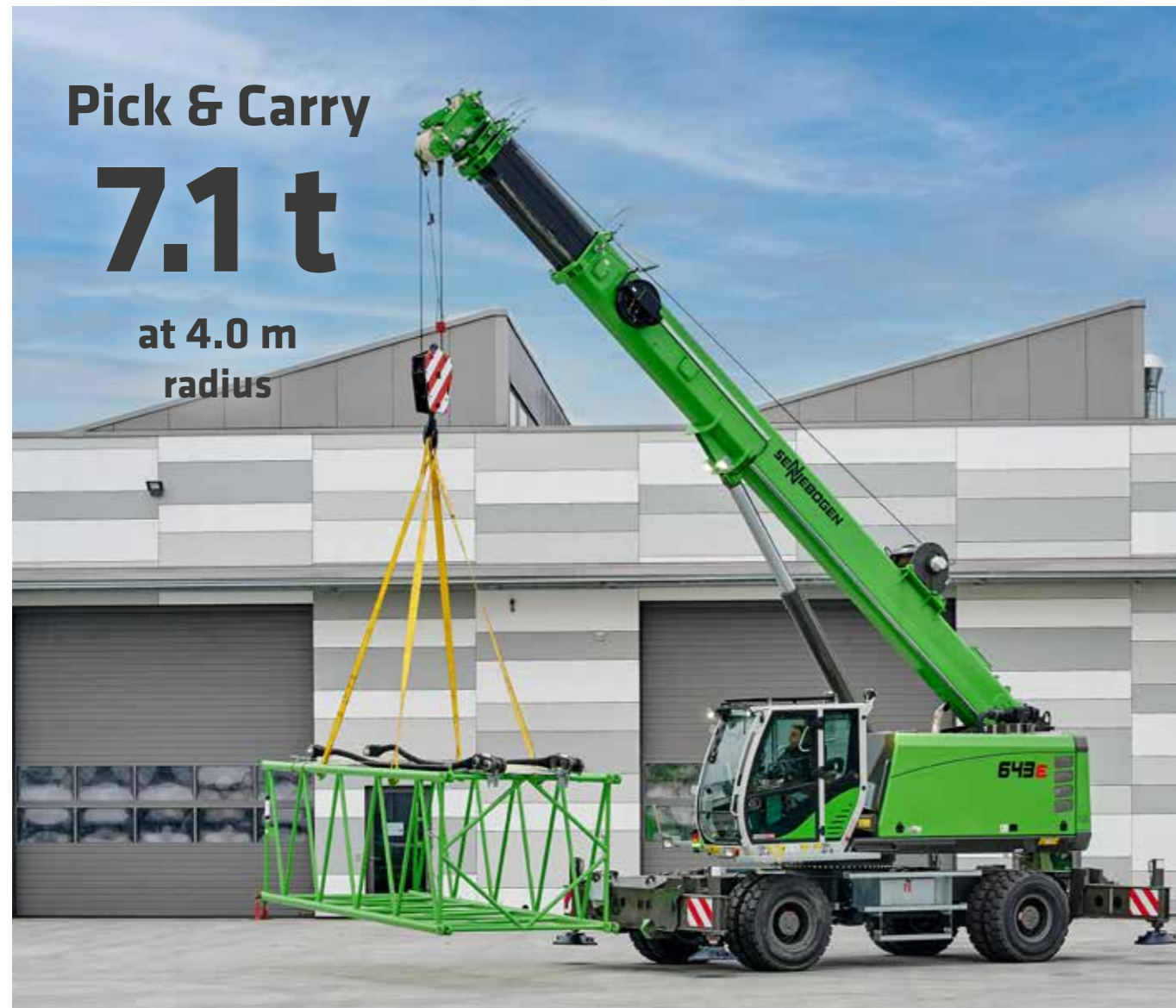
- State-of-the-art engine, drive and emission systems in line with the latest technology standards (stage V)
- Large-scale pipes and valves for maximum efficiency

A MODULAR DESIGN. NUMEROUS APPLICATIONS.



OUTSTANDING FLEXIBILITY. WITH THE FULL-POWER BOOM

- Impressive: the robust boom system can telescope easily and safely even with a load on the hook.
- Simple and convenient: can be operated using the joystick for any boom length, without needing to preselect length and load.
- Automatically optimal: always the best load capacity for each boom length.
- Steep things: can work on inclines of up to 4° either with supports or freestanding.*
- Comfortable work area: Maximum main boom length 30.0 m and folding 6.5 m or 13 m fly jib.



Pick & Carry

7.1 t

at 4.0 m
radius

COMPACT AND STRONG.
WITH MAXIMUM FLEXIBILITY.
THE 643 M.

- ✔ Pick & Carry: Lifting and moving loads
- ✔ Excellent maneuverability even on narrow construction sites thanks to its small turning circle
- ✔ Optimal overview when lifting loads thanks to cab tiltable by 15° as standard
- ✔ Wide range of equipment options and can be optionally operated via remote control
- ✔ Depending on your requirements, single tires (4 x 14.00-24) or twin tires (8 x 12.00 -20) for the best stability when working



Pick & Carry
Industry

14 t

at 4.0 m
radius

OPTIMIZED FOR LOAD CAPACITY.
THE INDUSTRIAL VERSION
643 MI.

- ✔ Constructive focus on optimizing the load capacity for boom lengths of 7.4 - 23 m
- ✔ Up to 100% more load capacity in Pick & Carry operation depending on boom length and working radius
- ✔ Larger undercarriage (MS40) with heavier axles for best stability and load carrying capacity at high loads
- ✔ Ideal for particularly heavy pick & carry tasks in storage space management, industrial relocations and industrial assembly
- ✔ The 643 MI is an optional special version. Detailed load capacity tables are available on request in the event of a project

BETTER VIEW. BETTER SAFETY. FREE VIEW UPWARDS.

- Flexibly mounted, comfortable operator's cab with super sound-proofing
- Panoramic view with all-round glazing made from safety glass, with curved, hinged windshield, large skylight and rear window
- Optimal interior climate thanks to continuously adjustable cab heating and air conditioning
- Air-suspension comfort seat with seat heater, vibration damper, adjustable to any weight
- Ergonomic set up, resonant controls
- Radio with Bluetooth®
- Optional: Cab can be hydraulically elevated by 2.40 m and tilted by 20° (standard: 15°)

MULTICAB

THE PREMIUM CAB.



PANORAMIC VIEW
tiltable up to **15°**
as standard

TAKE FULL CONTROL WITH OUR JOYSTICKS

- Joysticks on resonant, seat-mounted consoles
- Comfortable grip thanks to ergonomic design
- Shortcuts for direct and sensitive control of all functions
- Operating comfort thanks to optimized design of buttons and switches



GERMAN
DESIGN
AWARD
WINNER
2018

EASY TO TRANSPORT. READY FOR USE QUICKLY.

It is not just with procurement and operating costs that companies can make cost-effective decisions and savings. Astute contractors know that simple and economical transportation between construction sites is an important factor, too.



Economical

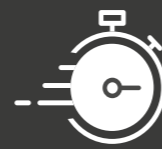
With a transport width of just 2.83 m, the 643 E fits easily on any standard low-loader even with twin tires.



< 27 t*

Easy

Thanks to its low weight of 27 t, the machine can be transported in its fully assembled mode.



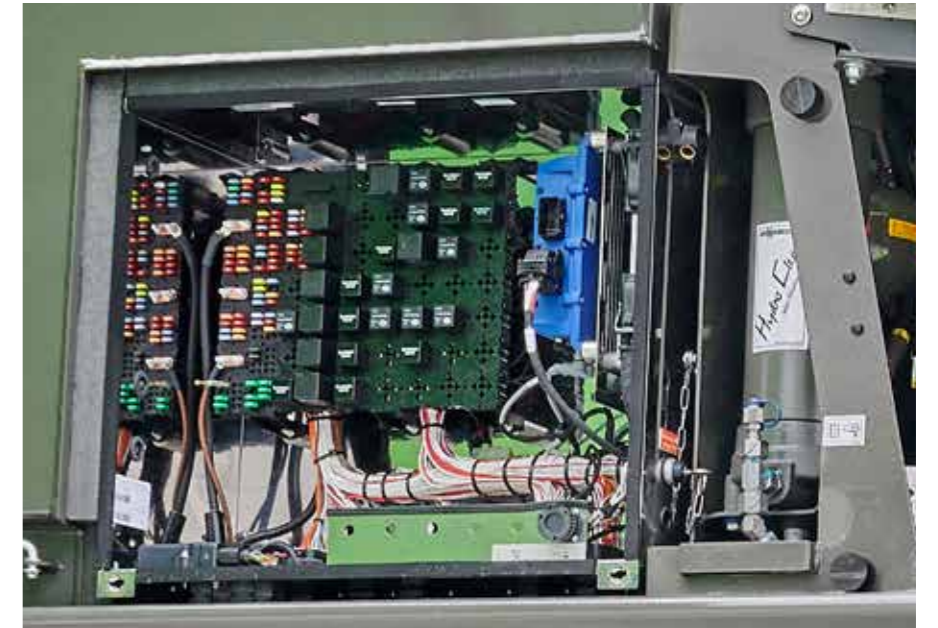
Quick

Once it reaches the construction site, the machine is ready to use as soon as it has been unloaded.

MAINTENANCE AND SERVICE. MAKE IT EASY ON YOURSELF.



The SENCON control system supports you with diagnostics and makes troubleshooting easier. So your machine is back in action more quickly.



All maintenance and service points are arranged clearly and easily accessible. The clear labeling of components makes finding your way around easy.

KEEP IT SIMPLE. WITH TECHNOLOGY THAT CAN BE MASTERED.



Reliable and practical technology makes life easier. Where electronics add no value, we rely on hydraulics and electrical systems.



We make you happy, not reliant. With cost-effective components and fewer process steps, you can take care of the machine on your own.



At the central electrical distribution board, clearly arranged standard components simplify control and troubleshooting.

TECHNICAL DATA, EQUIPMENT

MACHINE TYPE	
MODEL (TYPE)	643 Mobile
ENGINE	
TYPE	<p>Stage V: Cummins B4.5 FR95721 Rated power: 129 kW/2200 rpm Operating point standard: 129 kW/2200 rpm Operating point ECO: 129 kW/2050 rpm</p> <p>Stage IIIa: Cummins QSB4.5 FR96169 Rated power: 119 kW/2200 rpm Operating point standard: 119 kW/2200 rpm Operating point ECO: 119 kW/2050 rpm</p> <p>both: Direct injection, turbocharged, charge air cooling, reduced emissions</p>
COOLING	water-cooled
DIESEL FILTER	with water separator and heater
AIR FILTER	Dry filter with integrated pre-separator, automatic dust discharge, main element and safety element, contamination indicator
FUEL	360 l
ADBLUE	38 l
ELECTRICAL SYSTEM	24 V
BATTERIES	2 x 155 Ah
OPTIONS	<p>Low-temperature package with engine preheating and reinforced batteries</p> <p>Electric fuel pump</p>



UPPERCARRIAGE	
DESIGN	Torsion-resistant box design, precision crafted, steel bushings for boom mountings. Service-friendly design, engine installed in the longitudinal direction
ELECTRICAL SYSTEM	Central electrical distributor, battery disconnect switch
LIGHTING	LED headlights for optimal lighting of the work area
COOLING SYSTEM	3-circuit cooling system with high cooling output, electrically regulated fan drive for cooling water, charged air and oil
SAFETY	Camera monitoring of the area to the rear and the right side
OPTIONS	<p>Additional LED headlights</p> <p>2 warning beacons at the rear</p> <p>Additional cameras</p> <p>Sea climate resistant coating as corrosion protection</p> <p>Customized paint finish</p> <p>Low temperature package</p> <p>Automatic Central lubrication for boom attachment point, luffing cylinder and live ring track</p> <p>Pinion tooth lubrication</p>



TECHNICAL DATA, EQUIPMENT

HYDRAULIC SYSTEM / HYDRAULICS	
Pump unit attached directly to diesel engine. Load-sensing/ LUDV hydraulic system, electro-hydraulic work functions, load limit control, axial piston variable displacement pump. Multiple work functions can be controlled precisely simultaneously and independently from each other thanks to the independent, proportional allocation of the pump flows.	
DELIVERY RATE	up to 310 l / min
OPERATING PRESSURE	up to 330 bar
FILTRATION	High-performance filtration with long change interval
HYDRAULIC TANK	500 l
CONTROL SYSTEM	Proportional, precision hydraulic control of the movements, 2 servo joysticks for work functions, additional functions via switches and foot pedals – arranged clearly and ergonomically
SAFETY	<p>Hydraulic circuits with safety valves</p> <p>Pipe-fracture safety valves for luffing cylinder and telescopic cylinder</p>
OPTIONS	<p>Bio-oil filling</p> <p>SENNEBOGEN HydroClean micro-filter system (3 µm) with water separator</p> <p>Hydraulic tank preheating</p>

SLEWING DRIVE	
GEARBOX	Compact planetary gear with bent-axis hydraulic engine, integrated brake valves
SLEW BRAKE	Spring-loaded multi-disk brake
SLEWING RING	Large-scale, externally geared 1-row slewing ring
SLEWING SPEED	0-2 min ⁻¹ , variable

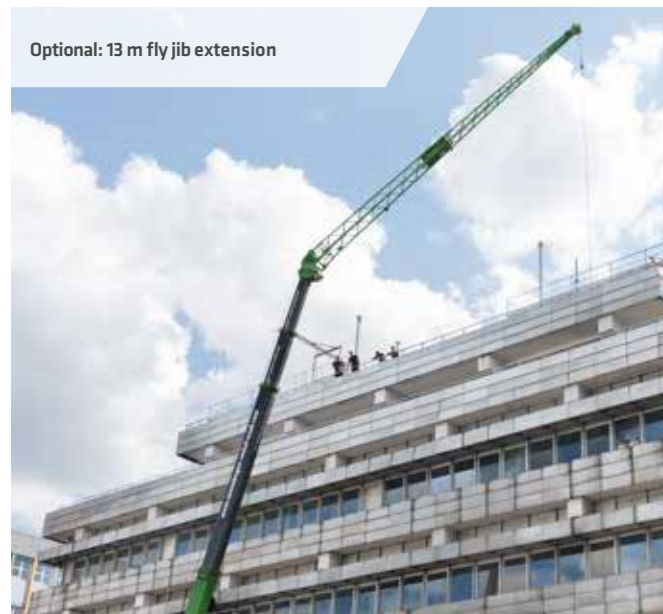
CAB	
CAB TYPE	Multicab, 15° tilttable
CAB FEATURES	Flexibly mounted, comfortable operator's cab with super sound-proofing, all-weather version, all-round glazing made from safety glass and a large skylight, opening windshield. Flexibly mounted comfort seat, weight adjustable and with vibration damper. Clear dashboard with swivel-mounted steering column. Continuously adjustable cab heating with air circulation control and particle filter, automatic air conditioning.
OPTIONS	<p>Hydraulically elevating cab type E240, can elevate up to 2.40 m and tilt by 20°</p> <p>Auxiliary heating system with timer</p> <p>Activated-carbon filter for cab</p> <p>FOPS protective front grating</p> <p>Protective roof grating</p> <p>FOPS protective roof grating</p> <p>Glazing of roof and windshield in bullet-proof glass design</p> <p>Radio with USB and SD connections, MP3 and Bluetooth® functions</p>



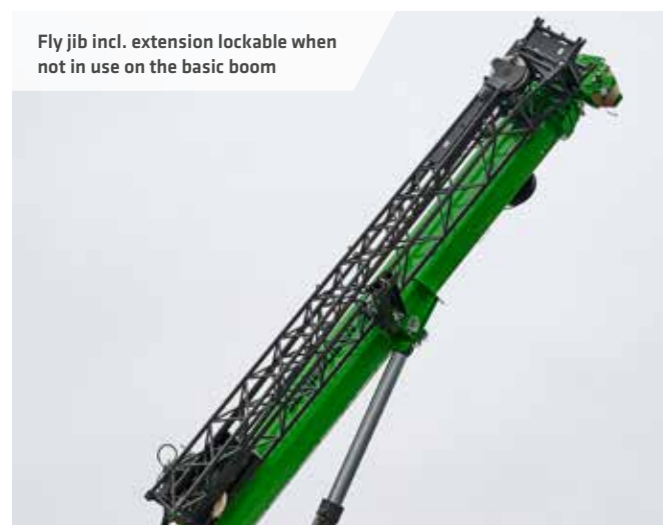
TECHNICAL DATA, EQUIPMENT




Optional: radio remote control



Optional: 13 m fly jib extension





Fly jib incl. extension lockable when not in use on the basic boom

EQUIPMENT 	
BOOM	4-part with pulley head, hydraulically telescopic end-to-end from 9 to 30 m, adjustment speed -12° to 70° in approx. 35 sec; complete telescopic extension in approx. 100 sec.
CRANE SAFETY	Latest generation of load moment monitoring with event recorder, clear operations panel showing all important data via the SENCON display, lifting limit switch, cable exit protection, pressure relief valves and pipe fracture protection
CYLINDERS	Hydraulic cylinders with high-quality sealing and guide elements
OPTIONS	<ul style="list-style-type: none"> 6.5 m fly jib, tiltable (0°, 40°), can be set up without auxiliary equipment, can be bolted to the basic boom when not in use Fly jib extension to 13 m, tiltable (0°, 40°) Auxiliary jib 3.5 t load capacity, 1-strand, 2nd Hook Customized paint finish Electro-hydraulic emergency unit Radio remote control Programmable working limit Winch motion indicator via vibration sensor in joysticks Additional load charts accepted for 2°/4° incline position SENtrack telemetry system

Subject to technical changes. Additional options available upon request.

TECHNICAL DATA, EQUIPMENT


UNDERCARRIAGE 	
DESIGN	Mobile undercarriage, torsion resistant and precision crafted, with integrated 4-point support
DRIVE	All-wheel drive and steering, travel drive with 2 stage powershift transmission, automatic pendulum axles with 4° pendulum angle, manually lockable, strong traction and driving dynamic
PARKING BRAKE	Spring-loaded multi-disk brake
TIRES	8 x 12.00-20 tires
SPEED	0 - 6 km/h on site 0 - 25 km/h
OPTIONS	4 x 14.00-24 tires

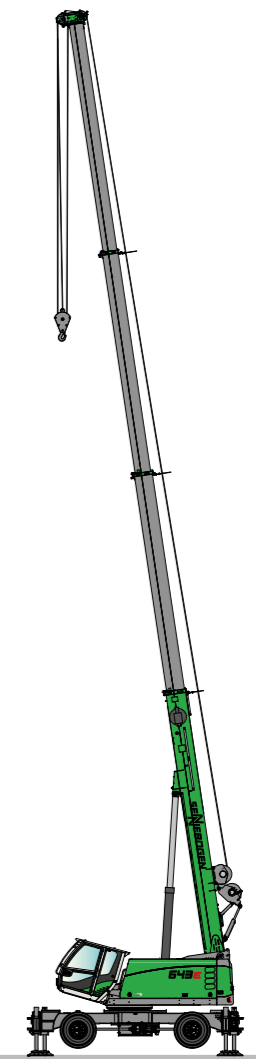
WINCH 	
The winches are driven via high-pressure-regulated adjustable hydraulic engines, so there is always optimal pulling force speed control. Hydraulic lowering brake valves for sensitive, wear-free braking. Strong oil bath planetary gears, low-maintenance. Holding brakes are spring-loaded, maintenance-free, low-wear disc brakes running in the oil bath, oil-cooled	
35 kN tensile force (3rd position), cable speed 0- 95 m/min., cable diameter 14 mm, max. cable length 160 m	
SAFETY BRAKE	Spring-loaded multi-disk brake
OPTIONS	2nd crane winch: 35 kN tensile force (3rd position), cable speed 0- 95 m/min., cable diameter 14 mm, max. cable length 130 m



Optional: 2nd crane winch

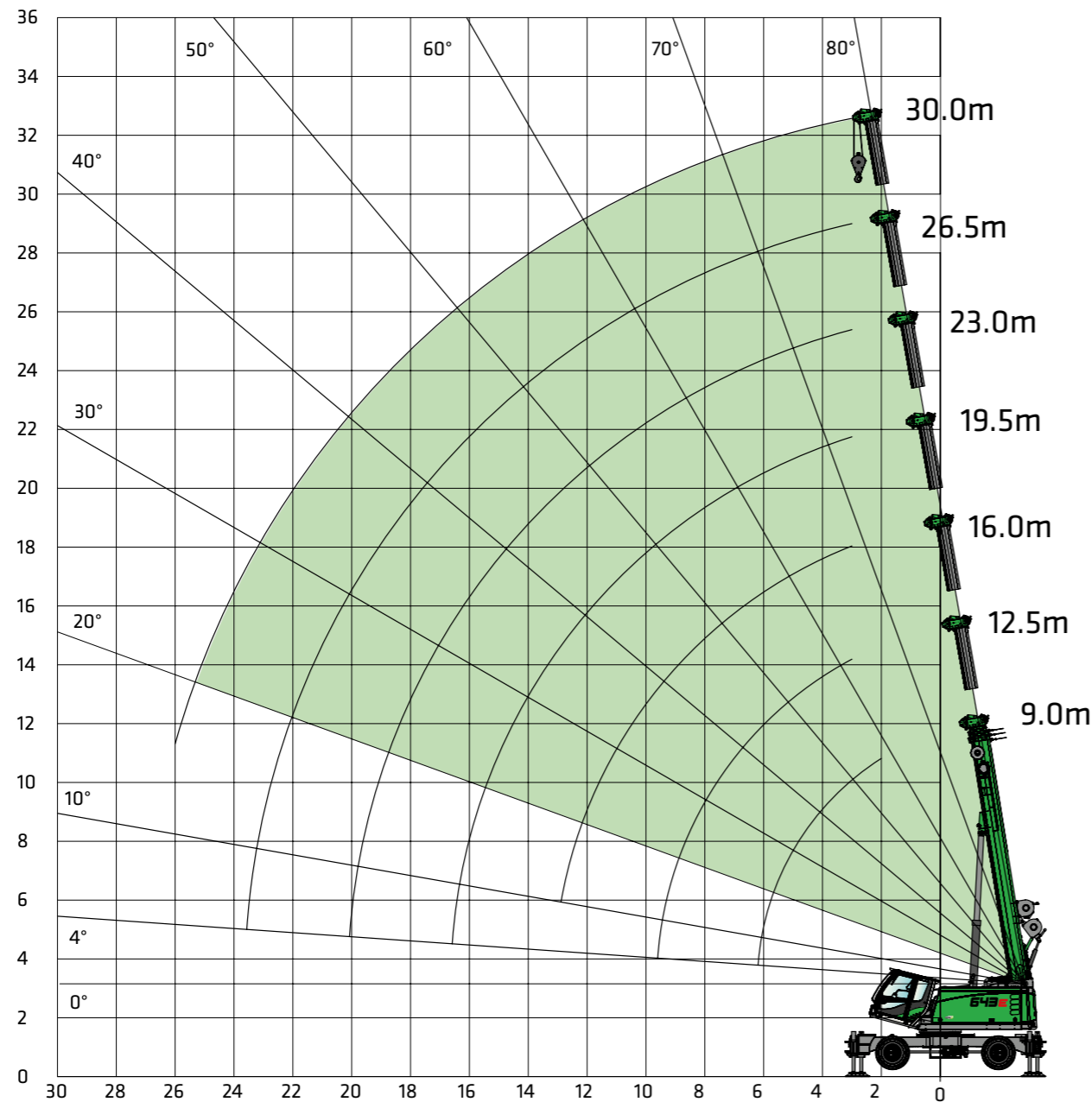
Subject to technical changes. Additional options available upon request.

OPERATING WEIGHT 	
MASS	approx. 27,000 kg With 30 m telescopic boom, 13 m fly jib, 25 t hook, 2 hoisting winches, 1.9 t counter-weight
NOTE	Operating weight varies by model and equipment. Subject to technical changes.



CRANE EQUIPMENT

 **MAIN BOOM**
HA 30 m



 **HOOK**

CAPACITY [t]	WEIGHT [kg]	NUMBER OF FALLS								
		9	8	7	6	5	4	3	2	1
32 t (4-roll)	300 kg	31,500 kg	28,000 kg	24,500 kg	21,000 kg	17,500 kg	14,000 kg	10,500 kg	7,000 kg	3,500 kg
25 t (3-roll)	220 kg			24,500 kg	21,000 kg	17,500 kg	14,000 kg	10,500 kg	7,000 kg	3,500 kg
4 t (0-roll)	40 kg									3,500 kg

LOAD RATINGS

 **MAIN BOOM**
HA 30 m

 **BALLAST**
1.9 t

 **DIN ISO**

 **360°**

 **SUPPORT**
100%

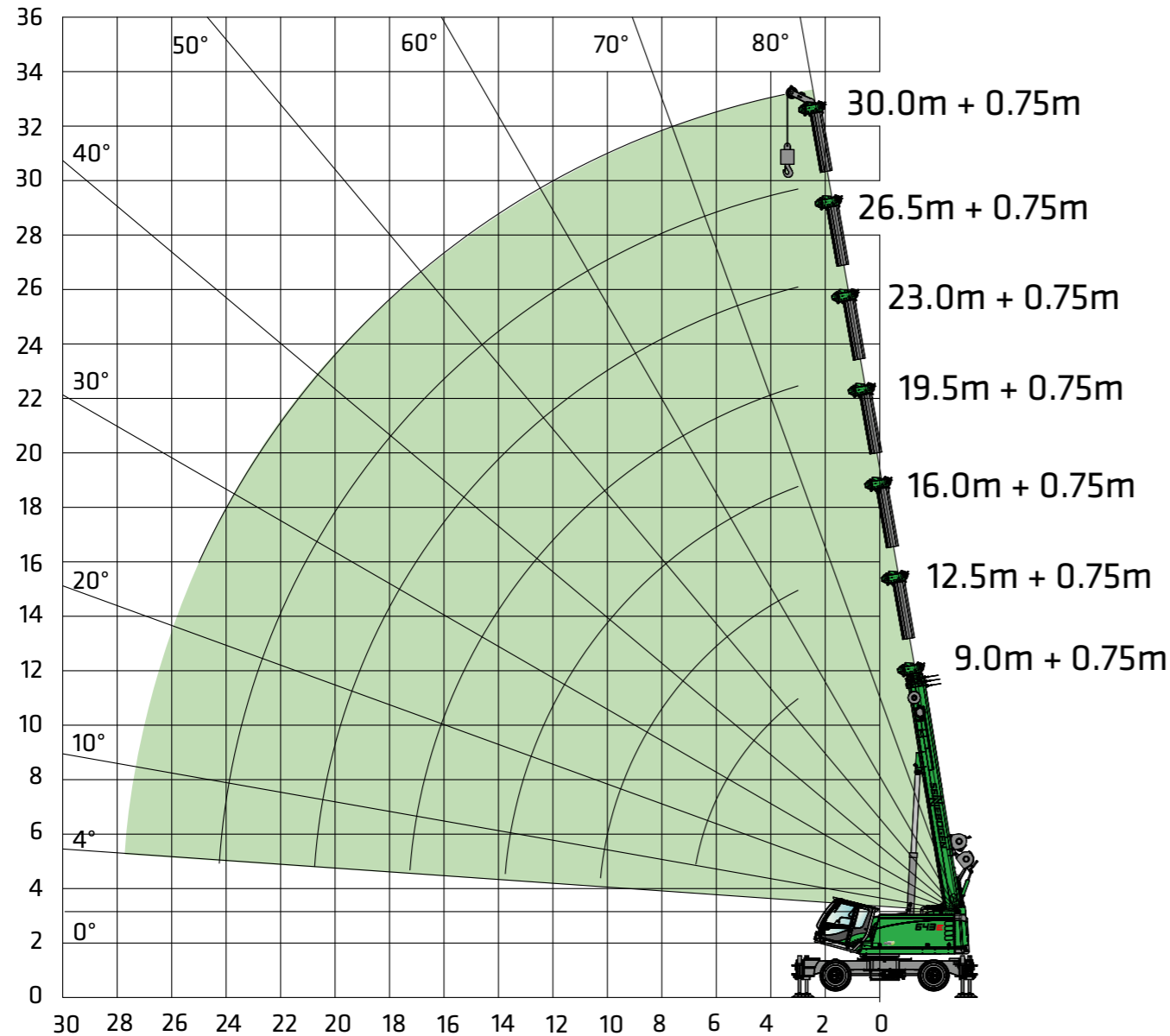
 **SUPPORT**
50%

 **FREESTANDING**

RADIUS [m]	BOOM LENGTH [m]																				
	9.0			12.5			16.0			19.5			23.0			26.5			30.0		
Support [%]	100	50	free	100	50	free	100	50	free	100	50	free	100	50	free	100	50	free	100	50	free
2.0	40.0*	35.0	21.6																		
3.0	30.1	27.1	12.0	20.0	20.0	12.0	15.0	15.0	12.0	14.0	14.0	12.5	11.0	11.0	11.0	8.9	8.9	8.9	5.0	5.0	5.0
4.0	24.8	20.4	7.3	20.0	20.0	7.1	15.0	15.0	7.1	14.0	14.0	7.6	11.0	11.0	7.8	8.9	8.9	8.1	5.0	5.0	5.0
5.0	18.8	12.8	4.9	18.5	12.6	4.8	15.0	12.5	4.7	13.3	13.1	5.1	11.0	11.0	5.4	8.6	8.6	5.6	5.0	5.0	5.0
6.0	13.4	9.0	3.4	13.2	8.9	3.3	13.1	8.8	3.2	12.0	9.3	3.6	10.3	9.6	3.8	8.3	8.3	4.0	5.0	5.0	4.0
7.0	12.7/6.2	8.6/6.2	2.8/6.2	9.9	6.6	2.1	9.9	6.6	2.1	10.4	7.0	2.5	9.5	7.3	2.8	7.8	7.5	3.0	5.0	5.0	2.9
8.0				7.8	5.1	1.4	7.8	5.0	1.4	8.2	5.4	1.7	8.6	5.7	2.0	7.4	5.9	2.2	5.0	5.0	2.2
9.0				6.2	3.9	1.0	6.2	3.9	1.0	6.6	4.3	1.3	7.0	4.6	1.4	6.9	4.8	1.6	5.0	5.0	1.6
10.0				5.5/9.6	3.4/9.6	0.6/9.6	5.1	3.1	0.6	5.5	3.4	0.8	5.8	3.7	1.1	6.0	3.9	1.3	5.0	4.1	1.2
11.0							4.2	2.5		4.5	2.8	0.5	4.9	3.0	0.7	5.1	3.2	0.9	5.0	3.4	0.9
12.0							3.4	2.0		3.8	2.2		4.1	2.5	0.5	4.3	2.7	0.6	4.5	2.9	0.6
13.0							2.8	1.5		3.2	1.8		3.5	2.1		3.7	2.3	0.4	3.9	2.4	0.4
14.0										2.7	1.5		3.0	1.7		3.2	1.9		3.4	2.0	
15.0										2.3	1.1		2.5	1.4		2.8	1.6		2.9	1.7	
16.0										1.9	0.9		2.2	1.1		2.4	1.3		2.5	1.4	
17.0										1.7/16.6	0.7/16.6		1.8	0.9		2.1	1.1		2.2	1.2	
18.0													1.6	0.7		1.8	0.9		1.9	1.0	
19.0													1.3	0.5		1.5	0.7		1.7	0.8	
20.0													1.1			1.3	0.5		1.4	0.7	
21.0													1.1/20.1			1.1			1.2	0.5	
22.0																0.9			1.1		
23.0																0.7			0.9		
24.0																0.7/23.6			0.7		
25.0																			0.6		
26.0																			0.5		
Number of falls	9	8	4	6	6	4	5	5	4	4	4	4	4	4	4	3	3	3	2	2	2
I	0%			50%			100%			100%			100%			100%			100%		
II	0%			0%			0%			25%			50%			75%			100%		
III	0%			0%			0%			25%			50%			75%			100%		
The load ratings must be reduced if there's a 13 m fly jib folded to the side of the main boom.																					
Load capacity reduction [kg]	570			420			330			280			240			210			180		

Tab. no.: 643M-30.0/75/2642/19/12.16
Tab. no.: 643M-30.0/75/2000/19/12.16
Tab. no.: 643M-30.0/75/1000/19/12.16

CRANE EQUIPMENT




LOAD RATINGS

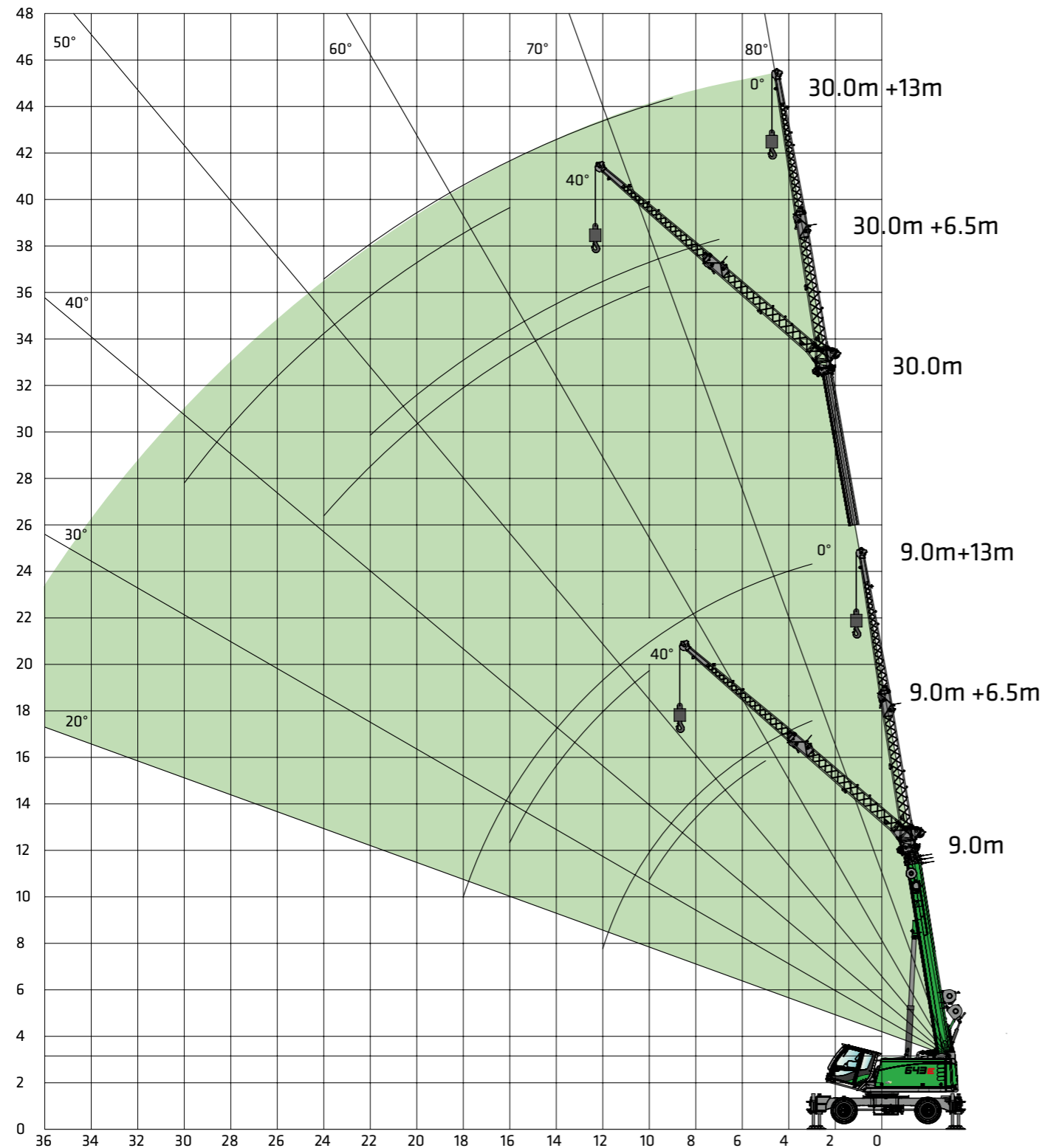


RADIUS [m]	BOOM LENGTH [m]																							
	9.0			12.5			16.0			19.5			23.0			26.5			30.0					
	0.75	0.75	0.75	0.75	0.75	0.75	0.75	0.75	0.75	0.75	0.75	0.75	0.75	0.75	0.75	0.75	0.75	0.75	0.75	0.75	0.75			
Support [%]	100	50	free	100	50	free	100	50	free	100	50	free	100	50	free	100	50	free	100	50	free	100	50	free
2.0																								
3.0	3.5	3.5	3.5	3.5	3.5	3.5	3.5	3.5	3.5	3.5	3.5	3.5	3.5	3.5	3.5	3.5	3.5	3.5	3.5/3.5	3.5/3.5	3.5/3.5	3.5/3.5	3.5/3.5	3.5/3.5
4.0	3.5	3.5	3.5	3.5	3.5	3.5	3.5	3.5	3.5	3.5	3.5	3.5	3.5	3.5	3.5	3.5	3.5	3.5	3.5	3.5	3.5	3.5	3.5	3.5
5.0	3.5	3.5	3.5	3.5	3.5	3.5	3.5	3.5	3.5	3.5	3.5	3.5	3.5	3.5	3.5	3.5	3.5	3.5	3.5	3.5	3.5	3.5	3.5	3.5
6.0	3.5	3.5	3.3	3.5	3.5	3.2	3.5	3.5	3.1	3.5	3.5	3.5	3.5	3.5	3.5	3.5	3.5	3.5	3.5	3.5	3.5	3.5	3.5	3.5
7.0	3.5/6.7	3.5/6.7	2.2/6.7	3.5	3.5	2.0	3.5	3.5	2.0	3.5	3.5	2.4	3.5	3.5	2.7	3.5	3.5	2.9	3.5	3.5	2.9	3.5	3.5	2.9
8.0				3.5	3.5	1.3	3.5	3.5	1.3	3.5	3.5	1.6	3.5	3.5	1.9	3.5	3.5	2.1	3.5	3.5	2.2	3.5	3.5	2.2
9.0				3.5	3.5	0.9	3.5	3.5	0.9	3.5	3.5	1.2	3.5	3.5	1.3	3.5	3.5	1.5	3.5	3.5	1.6	3.5	3.5	1.6
10.0				3.5	2.8		3.5	3.0	0.5	3.5	3.3	0.7	3.5	3.5	1.0	3.5	3.5	1.2	3.5	3.5	1.2	3.5	3.5	1.2
11.0				3.5/10.2	2.6/10.2		3.5	2.4		3.5	2.7		3.5	2.9	0.6	3.5	3.1	0.8	3.5	3.3	0.9	3.5	3.3	0.9
12.0							3.3	1.9		3.5	2.1		3.5	2.4		3.5	2.6	0.5	3.5	2.8	0.6	3.5	2.8	0.6
13.0							2.7	1.4		3.1	1.7		3.4	2.0		3.5	2.2		3.5	2.3		3.5	2.3	
14.0							2.3/13.7	1.0/13.7		2.6	1.4		2.9	1.6		3.1	1.8		3.3	1.9		3.3	1.9	
15.0										2.2	1.0		2.4	1.3		2.7	1.5		2.8	1.6		2.8	1.6	
16.0										1.8	0.8		2.1	1.0		2.3	1.2		2.4	1.3		2.4	1.3	
17.0										1.6	0.6		1.7	0.8		2.0	1.0		2.1	1.1		2.1	1.1	
18.0										1.5/17.2	0.5/17.2		1.5	0.6		1.7	0.8		1.8	0.9		1.8	0.9	
19.0													1.2			1.4	0.6		1.6	0.7		1.6	0.7	
20.0													1.0			1.2			1.3	0.6		1.3	0.6	
21.0													1.0/20.7			1.0			1.1			1.1		
22.0																0.8			1.0			1.0		
23.0																0.7			0.8			0.8		
24.0																0.5			0.6			0.6		
25.0																0.5/24.2			0.5			0.5		
26.0																								
Number of falls	9	8	4	6	6	4	5	5	4	4	4	4	4	4	4	3	3	3	2	2	2	2	2	2
I	0%			50%			100%			100%			100%			100%			100%			100%		
II	0%			0%			0%			25%			50%			100%			100%			100%		
III	0%			0%			0%			25%			50%			100%			100%			100%		
The load ratings must be reduced if there's a 13 m fly jib folded to the side of the main boom.																								
Load capacity reduction [kg]	570			420			330			280			240			210			180			180		

Tab. no.: 643M-30.0/75/2642/19/12/16 HA-S
 Tab. no.: 643M-30.0/75/2000/19/12/16 HA-S
 Tab. no.: 643M-30.0/75/1000/19/12/16 HA-S

CRANE EQUIPMENT

 **FLY JIB**
SA 6.5 m / SA 13 m



LOAD RATINGS

 **FLY JIB**
SA 6.5 m

 **BALLAST**
1.9 t

 **DIN ISO**

 **360°**

 **SUPPORT**
100%

RADIUS [m]	BOOM LENGTH [m]							
	9.0		16.0		23.0		30.0	
	6.5		6.5		6.5		6.5	
Support 100 %	—	△	—	△	—	△	—	△
	0°	40°	0°	40°	0°	40°	0°	40°
2.0								
3.0	6.0		6.0					
4.0	6.0		6.0					
5.0	5.5	3.5	6.0		6.0			
6.0	4.9	3.3	6.0	3.6	6.0			
7.0	4.4	3.1	5.9	3.4	6.0		3.5	
8.0	4.0	2.9	5.4	3.3	5.9	3.4	3.5	
9.0	3.7	2.8	5.0	3.2	5.5	3.3	3.5	
10.0	3.4	2.7	4.6	3.1	4.7	3.2	3.5	3.2
11.0	3.1		4.3	3.0	4.0	3.2	3.5	3.0
12.0	2.8		3.7	2.8	3.5	3.1	3.2	2.9
13.0			3.2	2.8	3.0	3.0	2.8	2.8
14.0			2.8	2.8	2.6	2.9	2.5	2.7
15.0			2.4		2.3	2.8	2.1	2.5
16.0			2.1		2.0	2.4	1.9	2.4
18.0			1.5		1.5	1.8	1.4	1.8
20.0					1.1	1.3	1.0	1.3
22.0					0.7		0.7	1.0
24.0								0.6
26.0								
28.0								
30.0								
32.0								
Number of falls	2	1	2	1	2	1	1	1
I	0 %		100 %		100 %		100 %	
II	0 %		0 %		50 %		100 %	
III	0 %		0 %		50 %		100 %	

Tab no.: 643R-30.0/75/2642/1.9/2.16 SA6.5

LOAD RATINGS



RADIUS [m]	BOOM LENGTH [m]							
	9.0		16.0		23.0		30.0	
	13.0		13.0		13.0		13.0	
Support 100%	0°	40°	0°	40°	0°	40°	0°	40°
2.0								
3.0	3.0							
4.0	3.0							
5.0	3.0		3.0					
6.0	3.0		3.0					
7.0	2.9		3.0		3.0			
8.0	2.6		3.0		3.0			
9.0	2.3		2.9		3.0		2.0	
10.0	2.1	1.6	2.7		2.9		2.0	
11.0	2.0	1.5	2.5		2.7		2.0	
12.0	1.8	1.4	2.4	1.5	2.6		2.0	
13.0	1.7	1.4	2.2	1.5	2.5		2.0	
14.0	1.6	1.3	2.1	1.5	2.4	1.5	2.0	
15.0	1.6	1.3	2.0	1.4	2.3	1.5	2.0	
16.0	1.5	1.3	1.9	1.4	2.2	1.4	2.0	1.5
18.0	1.1		1.7	1.3	1.8	1.4	1.7	1.4
20.0			1.6	1.3	1.5	1.3	1.3	1.4
22.0			1.3		1.1	1.3	1.0	1.3
24.0			1.0		0.9	1.3	0.8	1.3
26.0					0.6	1.0		1.0
28.0								0.7
30.0								0.5
32.0								
Number of falls	1	1	1	1	1	1	1	1
I	0%		100%		100%		100%	
II	0%		0%		50%		100%	
III	0%		0%		50%		100%	

Tab no.: 643R-30.0/75/2642/1.9/12.16 SA13

LOAD CAPACITY SCHEDULES

	MAIN BOOM HA			AUXILIARY JIB HA-S			FLY JIB SA 6.5 m			FLY JIB SA 13 m		
Support [%]	100%	50%	free	100%	50%	free	100%	50%	free	100%	50%	free
Counter weight [t]												
1.9 t	360°	360°	360°	360°	360°	360°	360°	-	-	360°	-	-

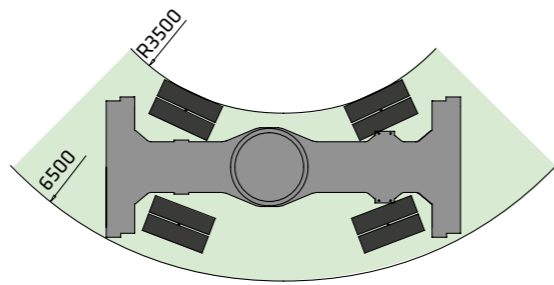
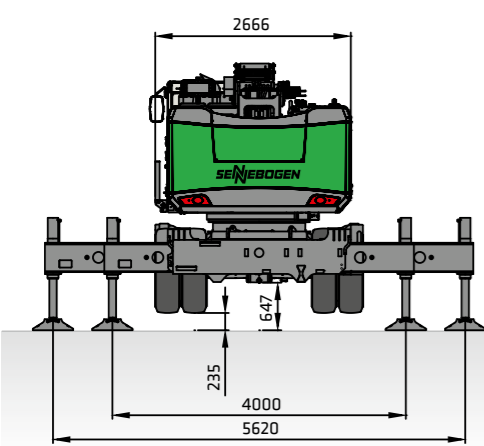
Notes:

1. The specified load ratings given apply when the machine is on a firm and level (±0.3°) surface.
2. The load ratings are given in tons and apply for 360°.
3. The load ratings take the DIN 15019.2 and ISO 4305 standards into account.
4. The weight of the load handling equipment (hooks, suspension gear) should be deducted from the load capacities.
5. Load capacities must be limited or reduced in adverse conditions such as soft or uneven ground, slopes, wind, side loads, swinging loads, jolts or sudden stopping of loads, personnel and operators not experienced in handling loads.
6. Permissible cable pull per strand in crane mode for a cable diameter of 14 mm is 3,500 kg.
7. The load ratings given are for reference only. Please refer to the tables in the operating instructions for the relevant applicable load ratings.
8. Load capacities for tilts of 2°/4° are also available on request.

OPTIONAL EQUIPMENT

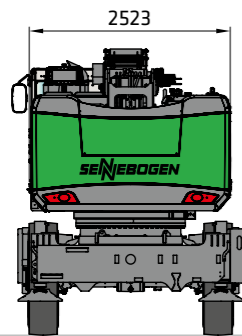
- FLY JIB 6.5 m**
max. 2-strand, possible offset angles 0°/40°
- FLY JIB EXTENSION TO 13 m**
6.5 m with 6.5 m extension, single strand, offset angle 0°/40°
- AUXILIARY JIB**
3.5 t load capacity, 1-strand, 2nd Hook

TRANSPORT DIMENSIONS

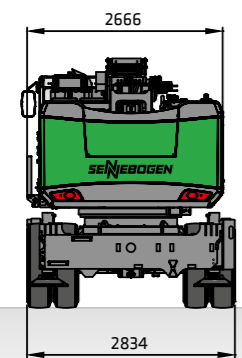
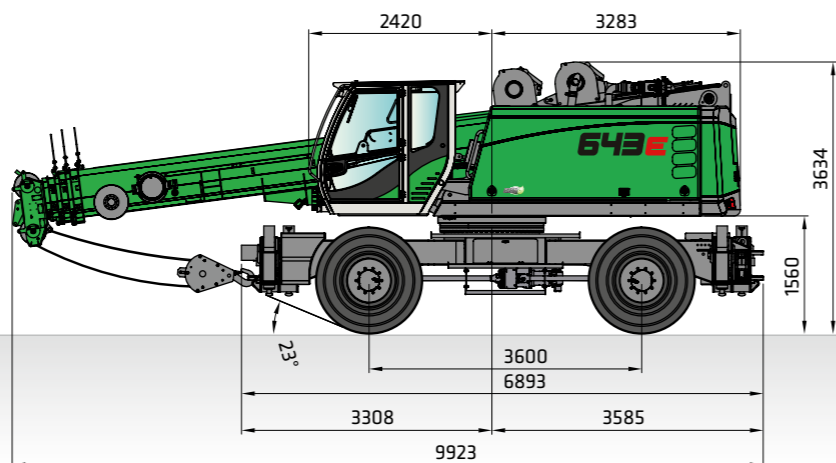


i **Operating weight:** approx. 27 t (with 13 m fly jib, 2 hoisting winches, 1.9 t counterweight and 25 t hook)

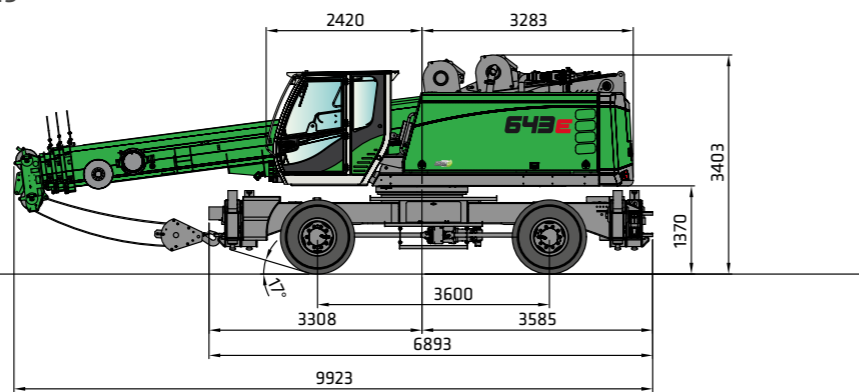
643 WITH MOBILE UNDERCARRIAGE WITH INTEGRATED 4-POINT SUPPORT



i **Single tires:** 4 x 14.00-24
Transport weight: approx. 27 t (13 m fly jib, 2 hoisting winches, 1.9 t counterweight and 25 t hook)



i **Twin tires:** 8 x 12.00-20
Transport weight: approx. 27 t (13 m fly jib, 2 hoisting winches, 1.9 t counterweight and 25 t hook)

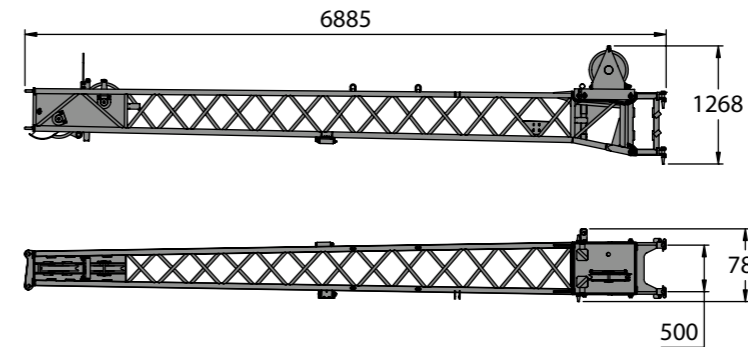


Dimensions in [mm]

ATTACHMENTS

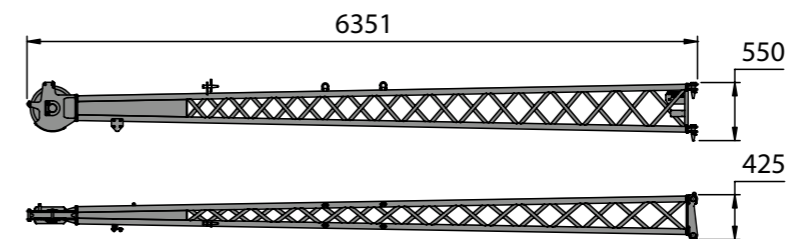
FLY JIB 6.5 m

i **Weight:** 600 kg



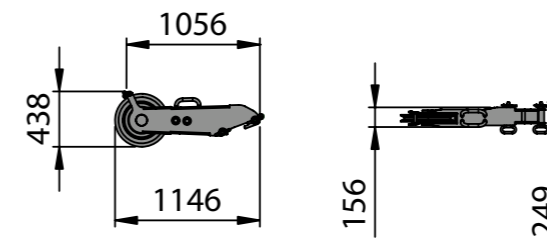
FLY JIB EXTENSION 6.5 m

i **Weight:** 250 kg



AUXILIARY JIB

i **Weight:** 50 kg



Dimensions in [mm]

THE ALL-ROUNDER. FOR USE IN INDUSTRY OR CONSTRUCTION SITES.

READ MORE



Pick & Carry operation; Germany



Building construction;
Germany



Civil engineering;
Germany



SENNEBOGEN ACADEMY

Increase your knowledge because success is based on knowledge. In the SENNEBOGEN ACADEMY we place great importance on ensuring it flows powerfully.
 → www.sennebogen-academy.com



SERVICE AND MAINTENANCE

Comprehensive customer service. And supply of spare parts. Service is a TOP priority for us.
 → www.sennebogen.com/customer-service



SENtrack

Manage your fleet efficiently with SENtrack: Use information that would otherwise stay hidden and increase your efficiency:
 → www.sennebogen.com/sentrack



RENTAL & USED

Discover the unique range of rental machines available from SENNEBOGEN Rental & Used. Find your rental machine here:
 → www.sennebogen-rental-used.com



MOVE BIG THINGS - WITH US!

over **69**
of experience

100 %
family company

over **1600**
experienced
specialists worldwide

4
production plants in
Germany

over **180**
sales and service partners
worldwide

11
different telescopic
cranes



Telehandler	Balancer	Material handler	Duty cycle crane	Crawler crane	Telescopic crane	Port crane
4-5.5 t	130-300 t	17-420 t	13.5-300 t	50-300 t	16-130 t	300 t

JOIN OUR OPERATORS' CLUB

The spotlight is on you and your machine! We focus on exclusive information, sharing experiences with other SENNEBOGEN operators as well as fun and enthusiasm.

All the benefits here → www.sennebogen.com/operators-club



643E | Mobile

Order no. 299148
643M-E-072110

This catalog describes machine models, the scope of equipment of individual models, and configuration options (standard equipment and optional equipment) of the machines delivered by SENNEBOGEN Maschinenfabrik GmbH. Machine illustrations may contain optional and supplementary equipment. Actual equipment may vary depending on the country to which the machines are delivered, especially in regard to standard and optional equipment. All product designations used may be trademarks of SENNEBOGEN Maschinenfabrik GmbH or other supplying companies, and any use by third parties for their own purposes may violate the rights of the owners.

Please contact your local SENNEBOGEN sales partner for information concerning the equipment variants offered. Requested performance characteristics are only binding if they are expressly stipulated upon conclusion of the contract. Delivery options and technical features are subject to change. All information is supplied without liability. Equipment is subject to change, and rights of advancement are reserved. © SENNEBOGEN Maschinenfabrik GmbH, Straubing, Germany. Reproduction in whole or in part only with written consent of SENNEBOGEN Maschinenfabrik GmbH, Straubing, Germany.

SENNEBOGEN
Maschinenfabrik GmbH
Hebbelstrasse 30
94315 Straubing, Germany

 www.sennebogen.com

MOVE BIG THINGS

Sales Crane Line
Tel. +49 9421 540-146
cranes@sennebogen.de

SPARE PARTS CENTER
Spare parts orders
spareparts@sennebogen.de

AFTER SALES
Technical support
service@sennebogen.de

