

Equipment and Features

STANDARD EQUIPMENT

E660FL

Engine

Yanmar engine	S
Turbocharger	-
Two-stage air filters	S
Three-stage fuel filters	S
Oil-water separator	S
Pre-heater	S

Electrical/Electronic control system

Engine safe start with restart prevention	S
Idling switch	S
Auto-idle function	S
9 work modes	S
Central fuse box	S
Halogen work lights (Frame-mounted 2 & Boom-mounted 1 LH)	S
Battery, 12V	S
Master electrical disconnect switch	S
Start motor, 12V	S
Colour monitor	S
Lock lever	S

Hydraulic system

Load-sensing hydraulic system	S
Boom/arm/swing priority	S
Boom/arm regeneration	S
Boom/arm holding	S
Two speed travel motors	S
Cylinder/motor cushioning	S
Dust sealing	S
Hydraulic oil (ISO VG46)	S
Multi-stage filtration	S

Frame

Reinforced revolving frame	S
Dozer blade	S
Rear-view mirror	S
Tool storage area	S

Undercarriage

Durable "X" under-carriage	S
Greased and sealed track links	S
Reinforced carrier/top rollers	S
Steel track with triple grousers	S

FOPS& ROPS Cab and interior

Fabric operator seat with suspension	S
Seat belt	S
Joysticks	S
Radio with MP3/AUX	S
Master key	S
Hour meter	S
Sun visor	S
Dual arm rests	S
Air conditioner	S
Sliding wind screen	S

STANDARD EQUIPMENT

E660FL

Electrical/Electronic control system

Fuel filler pump	o
Extra halogen work lights (Cab-mounted 1/ Boom-mounted 1RH)	o
Rotating warning beacon	o
Rear-view camera	o

Hydraulic system

High-temperature/Low-temperature hydraulic oil module	o
---	---

Undercarriage

600mm steel track	o
Rubber Pads	o
Dozer blade	S

Attachment

Quick hitch bracket	S
Quick hitch buckets	S
X3 pipes	S
Side or top mounted breakers	o
Log grapples	o
Front upper/front lower/top FOG (falling object guard)	o

Reliability in Action



E660FL
Hydraulic Excavator

PART OF VOLVO GROUP SINCE 2007

SDLG is part of Volvo Group and one of the largest manufacturers of construction machinery in China, with a wide network of dealerships and service workshops throughout the world.



Congratulations SDLG for winning EFQM Global Excellence Award One of the top three quality awards in the world



Babcock International Group [SDLG Authorised Dealer]

19 Taljaard Road, Bartlett, Boksburg, South Africa
Tel +27 (0) 11 230 7300 | enquiries babcock.co.za | www.babcock.co.za



POWERFUL YET ENERGY-SAVING



The highly efficient four-cylinder Yanmar engine, coupled with an energy-saving hydraulic system, delivers both power and fuel economy. Nine gear modes and an auto-idle function ensure power on-demand, minimising fuel consumption and noise.

SMOOTH-OPERATIONS



The load-sensing hydraulic system is engineered to deliver first-class performance and efficiency. The variable piston pump offers precise control in a wide variety of work conditions.

SAFE AND COMFORTABLE



The cabin features excellent fields of vision, and is built on industry-leading vibration and noise reduction technologies. A powerful air-conditioning system provides comfort in cabin, reducing operator fatigue and improving productivity.

EASY TO MAINTAIN



Designed to minimise maintenance efforts, the main components, filter and electrical systems are grouped for easy, ground level access.

RELIABLE AND DURABLE



All core components in the engine and hydraulic systems are sourced from world-renowned manufacturers to meet our highest reliability standards. A robust structure provides excellent stability and machine durability.

MULTI-PURPOSE

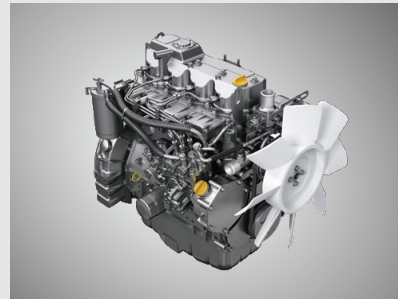


Access more applications with breaker piping, rubber pads and other optional accessories. This versatile machine is ideal for a wide variety of urban and rural tasks.



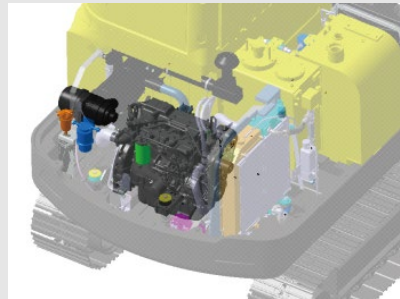
POWERFUL ENGINE

- Yanmar engine with EGR
- Single rotor distribution pump for higher ignition pressure and better combustion
- ECU controlled



Multiple filters for prolonged engine life

- 3-stage fuel filters
- 2-stage air filters
- Oil-water separator



- 9 work modes
- Auto-idle function



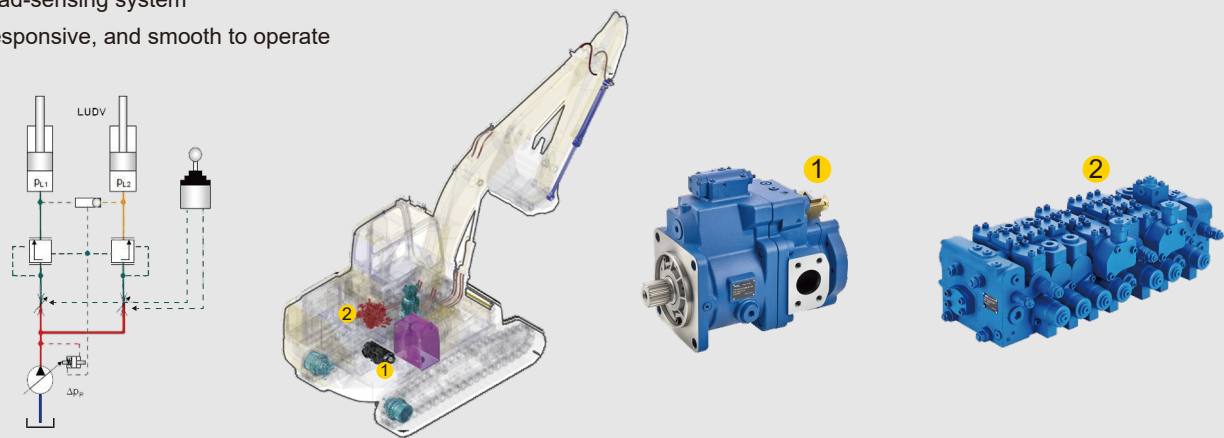
SAFE AND COMFORTABLE CABIN

- Excellent fields of vision
- Large rear-view mirror
- Large wiper area
- Lock lever
- Good anti-slip
- Hydraulic cylinder protective covers
- Silicone oil shock absorbers
- 6-way adjustable mechanical suspension seat
- Strong A/C with multiple air outlets in a well-sealed cabin
- Tinted glass
- Multiple storage compartments



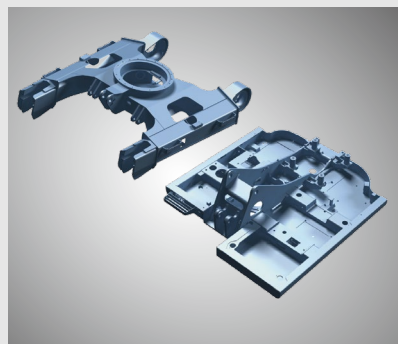
EFFICIENT HYDRAULIC SYSTEM

- Load-sensing system
- Responsive, and smooth to operate



ROBUST STRUCTURE

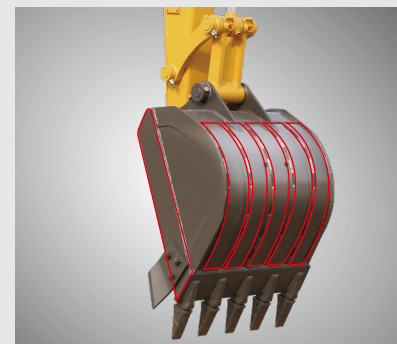
- Integrated frame offering balanced load distribution
- Reinforced structures
- Large ground clearance



- Robotic-welded high-strength steel plates
- Stringent NDT procedures
- Reinforced joints

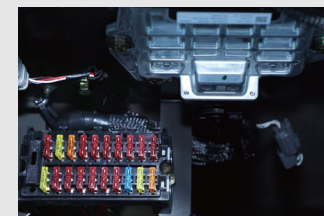


- Wear-resistant GP bucket lasting 20% longer



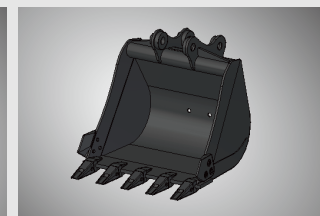
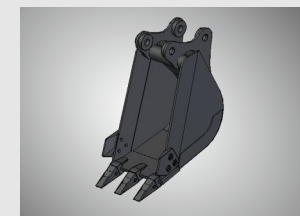
EASY MAINTENANCE

- Grouped filters, electrics and lubrication points
- Easy access at standing height



OPTIONAL ATTACHMENTS

- Top/side mounted breakers
- LM buckets
- Ditching buckets
- Log grapples



ENGINE

	Unit	E660FL
Model	-	4TNV98-EXSLGC
Type	-	In-line, water-cooled, four-stroke
Rated power	kW@rpm	38.3@2200
Max. torque	Nm@rpm	208.6@1650
Displacement	ml	3319
No. of cylinders	-	4
Cylinder bore x stroke	Φ×mm	98×110
Emission	-	Tier III (GB 20891-2014)

HYDRAULIC SYSTEM

	Unit	E660FL
Hydraulic system type	-	Load-sensing
Main pump	-	1 variable displacement axial piston pump
Max flow rate	L/min	138
Relief valve setting		
Implement circuit	bar	215
Travel circuit	bar	215
Swing circuit	bar	225
Pilot circuit	bar	45

ELECTRICAL SYSTEM

	Unit	E660FL
System voltage	V	12
Battery voltage	V	12
Battery capacity	Ah	100
Alternator voltage	V	13.5
Starter voltage	V	12

SERVICE REFILL CAPACITY

	Unit	E660FL
Fuel tank	L	135
Engine coolant	L	10
Engine oil	L	12
Swing drive	L	1.2
Travel drive	L	2×1.3
Hydraulic tank	L	50
Hydraulic system	L	100

DRIVE AND BRAKES

	Unit	E660FL
Drive motor	-	2 axial piston motors
Max drawbar pull	kN	50
Max travel speed (low/high)	km/h	2.4/4.8
Service/parking brakes	-	Wet disc, spring applied, hydraulic release
Gradeability	°	30

SWING SYSTEM

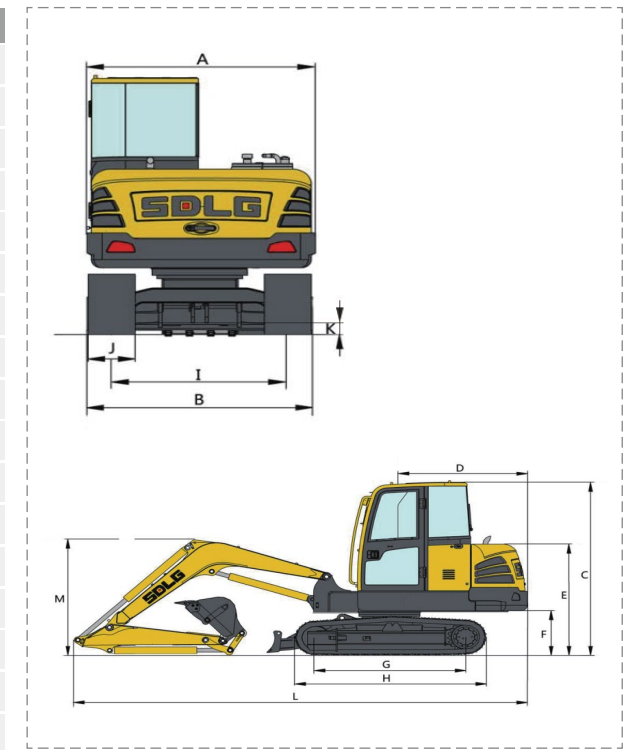
	Unit	E660FL
Swing motor	-	Axial piston motor
Swing brake	-	Wet disc
Swing speed	r/min	0 ~ 11.5

UNDER CARRIAGE

	Unit	E660FL
No. of track shoes	-	2×40
No. of top rollers	-	2×1
No. of bottom rollers	-	2×5

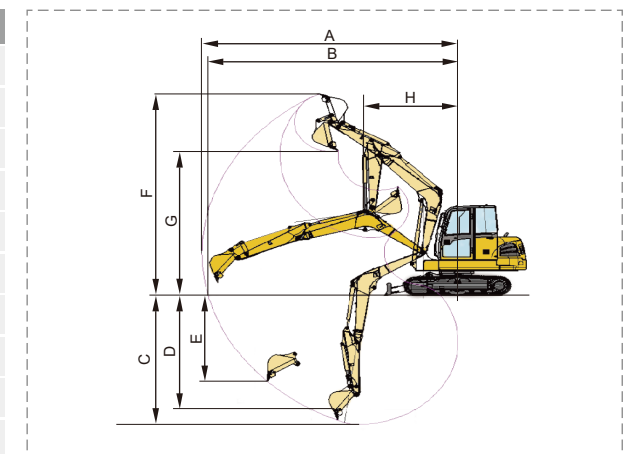
DIMENSIONS

	Unit	E660FL
Boom length	mm	3030
Arm length	mm	1540
A Overall width of upper assembly	mm	1870
B Overall width	mm	1960
C Overall height	mm	2660
D Tail swing radius	mm	1670
E Overall height of engine hood	mm	1730
F Counterweight clearance	mm	720
G Wheel base	mm	1990
H Track length	mm	2540
I Track gauge	mm	1540
J Track shoe width	mm	400
K Min. ground clearance	mm	365
L Overall length	mm	5945
M Overall height of boom	mm	1820
Bucket capacity	m ³	0.21
Operating weight	kg	6050



EXCAVATING RANGE

	Unit	E660FL
A Max. digging reach	mm	6125
B Max. digging reach on ground	mm	5975
C Max. digging depth	mm	3760
D Max. digging depth (horizontal 2.44m)	mm	3325
E Max. vertical wall digging depth	mm	2500
F Max. digging height	mm	5915
G Max. dumping height	mm	4220
H Min. front swing radius	mm	2260
Max. digging force--bucket (ISO)	kN	45
Max. digging force--arm (ISO)	kN	30



ATTACHMENTS

Bucket	Model	Capacity/m ³	Width/mm	Weight/kg	Number of teeth/side cutters
	E660FL	0.1-0.3	400-795	122-168	(3-5)/2
Log grapple	Model	Diameter/mm	Width/mm	Opening size/mm	Remarks
	E660FL	140	748	1411	Combined teeth 2 upper + 3 lower (upper movable)
		207	704	1780	Ganged teeth 2 upper + 3 lower (both movable)
Breaker (Side mounted)	Model	Diameter/mm	Weight/kg	Pressure/bar	Frequency/bpm
	E660FL	68	263	110-140	500-900