

Reliability in Action

Grader G9220



G9220 Grader

Reliable performance and power – now in a choice of operating weights.

SDLG offers graders with blade widths from 12 to 14 feet. The G9220 grader is a medium duty machine with basic operating weights of 15 800kg and 16 500kg. The G9220 is offered in both a standard and VHP version.

- The G9220 has a blade width of 14 feet with a blade pull of 10 530 kg.
- The G9220 is available in a VHP version. VHP machines offer the operator greater control over the grading process, with the freedom to shift easily from manual to automatic transmission and a piston pump hydraulic system that always delivers the optimum oil flow to the hydraulic functions, regardless of engine speed. In this way, VHP allows the operator to focus on grading with greater precision for superior results.

SDLG graders are all based on proven and reliable technologies, making for well balanced machines with excellent blade pull and blade down force.

- 1 Every SDLG grader is equipped with a tandem ready to do the job. It has +/- 15° oscillation to keep the blade level for the very best grading result. Equipped with a no-spin differential, heavy-duty bearings and heavy-duty chain drive, an SDLG tandem provides outstanding traction and reliability.
- 2 For optimal steering and grading performance, SDLG graders are equipped with a heavy-duty front axle to handle steering, wheel lean and axle oscillation.

- 3 The unique SDLG circle drive system comes with 3 support shoes and non-greasing slide bushings for better grading and easier maintenance. SDLG graders also feature an asymmetric drawbar ball stud that can be rotated 180° in order to keep the drawbar in horizontal level position – vital when performing fine grading. Every SDLG grader comes with a 7-position blade control system to facilitate all types of grading.
- 4 SDLG is committed to making the operator's job easier and more productive. The cab is designed to offer exceptional all-round visibility; with easy-to-use industry-standard controls, comfortable seating, air conditioning and ROPS/FOPS certification as standard.

- 5 The G9220 is powered by a Dalian Diesel engine and features variable horsepower as standard – for better grading results and more efficient fuel economy – as well as cruise control. All machines have 6 forward and 3 reverse gears, and a possibility to add automatic shifting function.
- 6 Maintenance access is excellent with large side and rear doors. Greasing points are easy to reach for fast and efficient daily maintenance.



Part of Volvo Group since 2007

SDLG is part of Volvo Group and one of the largest manufacturers of construction machinery in China, with a wide network of dealerships and service workshops throughout Africa and the Middle East.

SDLG G9220 Grader : equipment and features

Cab	
Adjustable steering column	S
Air conditioning	S
Seat belt	S
Mechanical seat	S
Arm rests	O
Radio	S
Sun visor	S
ROPS/FOPS	S
Laminated glass	O
Drivetrain	
Manual Variable Horse Power	S
Automatic Variable Horse Power	-
Cruise control	S
Dual brake circuit	O
Automatic transmission	-
17.5 - 25 tires	S
14.0 - 24 tires	O
13.00 - 24 tires	-
Fenders	O
All wheel drive	O
Engine preheater	O
Drum brakes	O
Wet brakes	S

Key
S = Standard equipment O = Optional equipment

Hydraulics	
10 section hydraulic control valve	S
Circle turn relief integral with main manifold	S
Cylinder accumulators	O
Blade float function	O
Moldboard	
7-position Blade Control System	S
10 ft blade	-
12 ft blade	S
13 ft blade	O
14 ft blade	O
Nylon lower slide bearing	O
Metallic lower slide bearing	S
Attachments	
Rear ripper	O
Front dozer blade	O
Front scarifier	O
Mid mount scarifier	O
Rear scarifier	O
Other	
Back up alarm	S
Moldboard worklights (4)	S
Cab mounted front worklights (2)	S
Rear mounted worklights (4)	S
Front mounted headlights/directional lights	S
Rear mounted brake lights/directional lights	S



Special features

■ **The unique SDLG dual gear Circle Drive System** uses direct acting hydraulic power and two hardened drive pinions for exceptional turning and holding capability under full load. The system has 3 support shoes and non-greasing slide bushings for superior grading and easier maintenance.



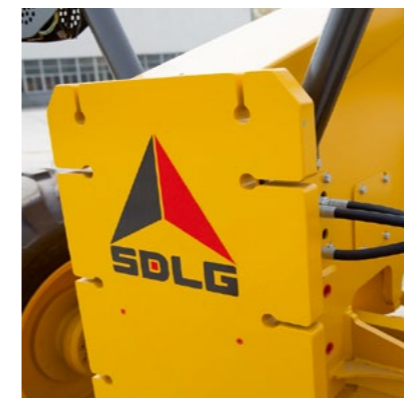
■ **The SDLG tandem** has +/- 15° oscillation to keep the blade level for the very best grading result. Equipped with a no-spin differential, heavy-duty bearings and heavy-duty chain drive, an SDLG tandem provides outstanding traction and reliability.



■ **The front axle on SDLG graders** is always heavy-duty and durable. With an excellent 16° oscillation and 18° wheel leaning capabilities combined with great steering angles, SDLG brings you a front axle flexible enough to handle all your grading jobs.



■ **The frames of SDLG graders** are of a box-type design to provide the best strength and durability. SDLG frames are prepared to take all attachments from the factory, for best performance. The excellent frame articulation gives you outstanding maneuverability and short turning circles.



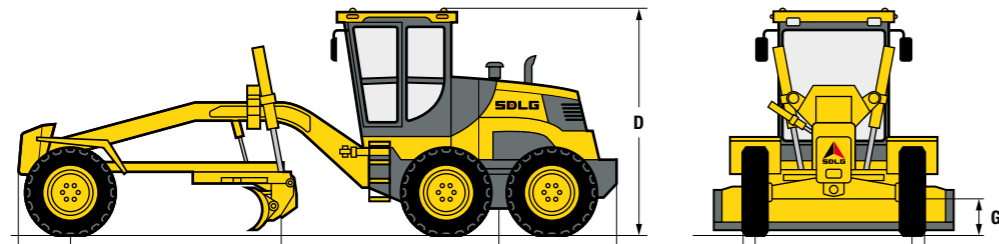
■ **The operator environment** has been designed with safety and productivity in mind. Cabs are ROPS/FOPS certified, with large glass areas for best visibility, an adjustable steering column and air conditioning for best operator comfort.



■ **Blade pull and blade down forces** are best in class. This is achieved by optimum weight distribution and design. High blade pull force means that you will have the ability to move high loads on your blade, while high blade down force gives you the ability to steer with higher loads on your blade.



SDLG Graders: specifications



Description	units	G9220
Dimensions		
A. Overall length	mm	9 235
B. Blade base (ISO 7134)	mm	2 675
C. Wheel base	mm	6 480
D. Overall height	mm	3 240
E. Width - front tyre centre lines	mm	2 260
F. Width - outside tyres	mm	2 710
G. Front axle ground clearance	mm	610
Operating weight		
Base operating weight	kg	16 500
Over front wheels	kg	4 800
Over rear wheels	kg	11 700
Attachment weights		
Push block	kg	52
Parallel rear ripper	kg	1 449
Radial rear ripper	kg	1 081
Mid mount scarifier	kg	850
Front mount scarifier	kg	867
Dozer blade 9 feet	kg	1 160

Description	units	G9220
Moldboard		
Width	mm / ft	4 267 / 14
Slide distance (left / right)	mm	673
Maximum bank sloping angle	°	90
7-position blade control system		Yes
Maximum ground clearance	mm	445
Cutting depth	mm	787
Tilt forward	°	47
Tilt backward	°	5
Front axle and articulation		
Front wheel lean	°	18
Oscillation	° +/-	16
Minimum turning radius	mm	600
Steering arc	°	50
Frame articulation	°	23

Description	units	G9220
Productivity		
Blade pull @ 0.9	kg	10 530
Blade down force	kg	8 175
Engine		
Make		Dalian-Deutz
Model		BF6M1013 ECP
Type		In-line, watercooled, 6 cylinder, 4 stroke, electronic injection
Rated power	kW	164 @ 2 100
Bore and stroke	mm	108 / 130
Displacement	ml	7 146
Emission standard		Stage II (GB 20891-2007)
Transmission		
Make and model		ZF 6WG200
Type		Manual
Cruise control		Yes
Forward gear 1, maximum speed	km/h	5
Forward gear 2, maximum speed	km/h	9
Forward gear 3, maximum speed	km/h	12
Forward gear 4, maximum speed	km/h	20.5
Forward gear 5, maximum speed	km/h	25.5
Forward gear 6, maximum speed	km/h	39
Reverse gear 1, maximum speed	km/h	5
Reverse gear 2, maximum speed	km/h	12
Reverse gear 3, maximum speed	km/h	25.5

Description	units	G9220
Circle		
Pitch diameter	mm	1 626
Adjustable circle wear plates		3
Hydraulics		
Type		2 x gear pump
Maximum pressure	MPa	21
Output	L/minute	2 x 65
Brakes		
Service brake system		Wet brake
Parking brake		Manual, inner drum on axle of transmission
Wheels		
Tyre size		17.5-25, E2
PLY rating		16
Capacities		
Fuel tank	L	270
Transmission	L	28
Final drive	L	28
Tandems (each)	L	23
Hydraulic oil	L	132
Engine oil	L	25
Coolant	L	24



SDLG machines are built to be like the people that own them: hardworking, genuine and reliable. Cost effective, robust machines with fuel efficient engines that are easy to operate and easy to maintain.

Everything about SDLG is designed to give you the confidence that you can complete the job to a high standard and on schedule. And when you need parts or service, you can trust your SDLG dealer to deliver on our promise.

When you buy SDLG, you're buying reliability: **Reliability in Action.**



www.sdlg-africa.com

babcock™

Babcock International Group: Tel +27 (0)11 230 7300 enquiries@babcock.co.za
Branches: Botswana +267 390 2869 Bloemfontein +27 (0)51 432 1226 Cape Town +27 (0)21 001 4480 Durban +27 (0)31 700 6009
George +27 (0)44 001 0050 Kimberly +27(0)53 832 3443 Middelburg +27 (0)13 001 1234 Mozambique +258 21 900 120
Nelspruit +27 (0)13 001 1280 Port Elizabeth +27 (0)41 407 5900 Richards Bay +27 (0)35 001 7660 Rustenburg +27 (0)14 001 0030
Steelpoort +27 (0)13 230 9054 Wolmaransstad +27 (0)18 596 1514 Windhoek +264 61 305 560/3 Zambia - Kitwe +260 (0)96 533 5586
Zambia - Lusaka +260 211 127 2926/28 Zambia, Solwezi: +26 (0)21 221 6200
Independent Dealer: Polokwane - RGR Services +27 (0)15 297 6711

www.babcock.co.za