



TREE CARE HANDLER

WITH A REACH
OF UP TO 21 m



140 kW



34.5 t



21 m



MAX CAB

Stage V



728E

The extreme.

High load capacities

At a reach of 18 m, 1.7 t can be lifted – even complex hazardous tree felling poses no challenge for the 728 E.

Flexibility

Whether for difficult applications on slopes, uneven ground or next to busy roads – the 728 E is suitable for a wide range of applications thanks to its stable undercarriage and robust forest tires.

Extensive reach

Up to 21 m range including equipment speaks for itself, creating an impressive working radius in combination with the swiveling uppercarriage.



Efficiency

One man, one machine – with just one driver, you can process impressive quantities in landscape maintenance or timber harvesting in the shortest possible time.

Safety

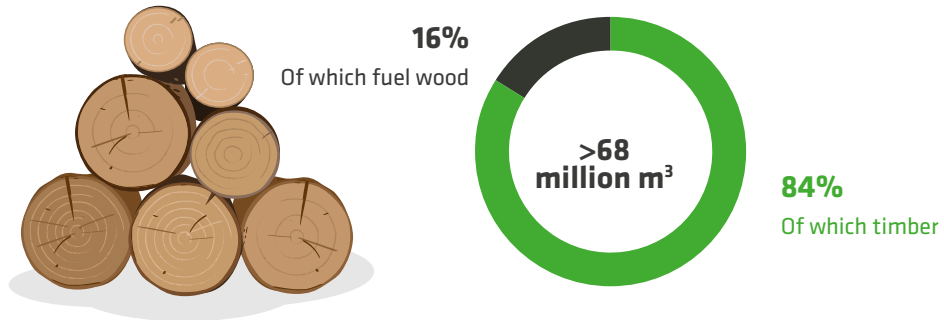
Safety is an absolute priority in wood applications – we rely on full protective grilles, additional railings and handles as well as windows made from bulletproof glass.

up to
21 m
reach

Challenges in tree care

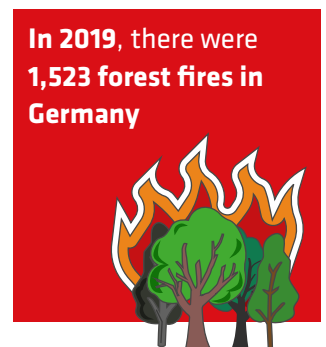
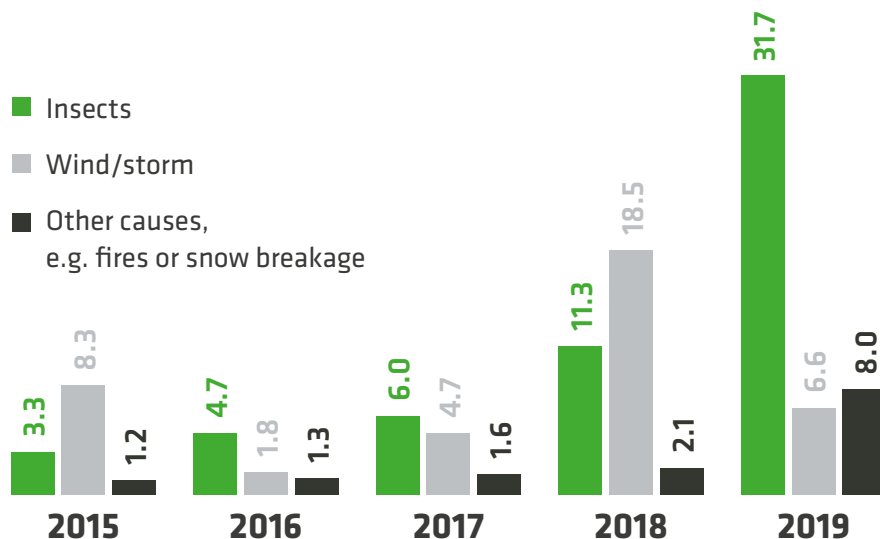
Almost 70 million cubic meters of wood were felled in Germany in 2019

Amount of wood harvested in 2019 (without bark)



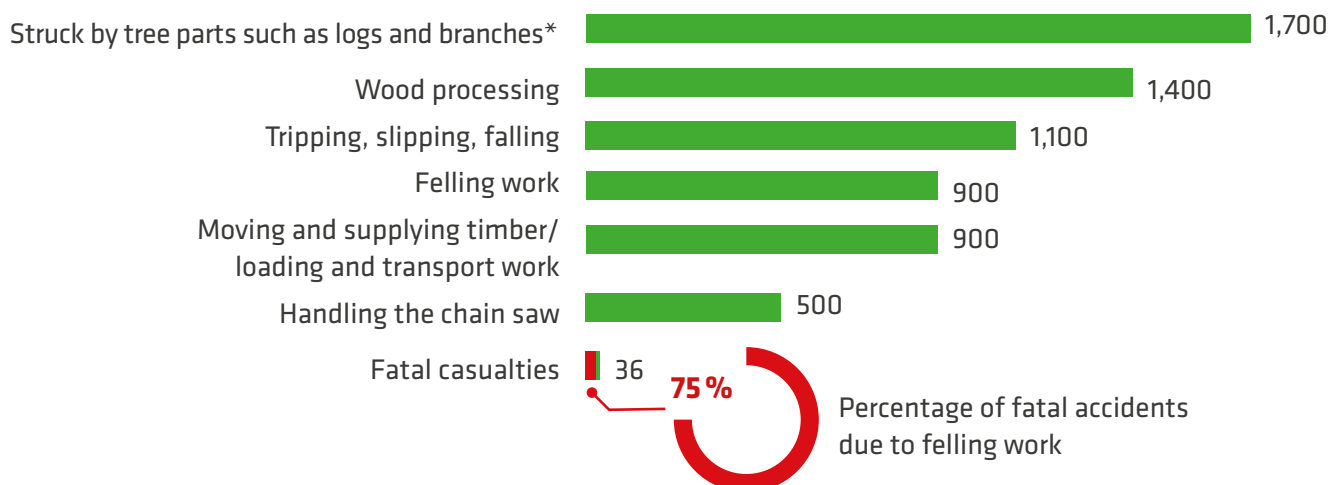
Increase in high-risk timber handling in Germany

Damage-related timber handling in Germany by cause in million m³



Felling work poses a major risk of occupational accidents

People suffering occupational accidents during forestry work in 2019 according to activity or cause of accident



The SENNEBOGEN 728 E compared to other felling techniques

Exceptionally high reach and height

Safety features:

- ✓ Elevating & tilting cab
- ✓ Sturdy handles
- ✓ Railings
- ✓ LED lighting

Various equipment:

- ✓ Grab saws
- ✓ Grab
- ✓ Mulcher
- ✓ Cutting unit

Separate and coordinated hydraulic circuit for the attachment

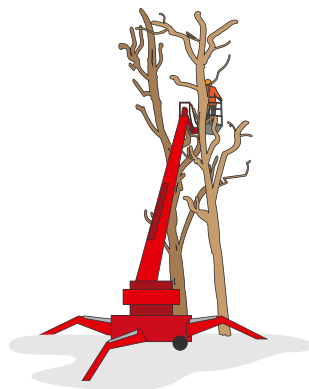
High stability

Disadvantages of alternative felling techniques



Rope climbing equipment/arborists

- ✓ Higher personnel costs
- ✓ Greater risk



Aerial work platforms

- ✓ Shorter range
- ✓ Little control when placing logs



Telescopic handler in combination with grab saw

- ✓ Unsafe standing
- ✓ Lower load capacities
- ✓ Less performance

Advanced. The E Series



LONG SERVICE LIFE, HIGH VALUE RETENTION

- Reliable and powerful thanks to its robust construction and high-quality components.
- Temperature-controlled cooling system, designed and tested for heavy-duty applications and high ambient temperature

SOPHISTICATED, STATE-OF-THE-ART TECHNOLOGY

- In the 5th generation – decades of experience in designing and constructing material handlers



SIMPLE TO MAINTAIN AND SERVICE

- Technology that can be mastered and no over-engineering, easy accessibility to all components

ENVIRONMENTALLY-FRIENDLY DRIVE TECHNOLOGY

- State-of-the-art engine, drive and emission systems in line with the latest technology standards (stage V)
- Large-scale pipes and valves for maximum efficiency



SAFETY FIRST.

Whether you are felling hazardous trees or working on the roadside – special protective equipment ensures the safety of the operator at all times.



Full safety guard for the cab

Additional safety thanks to a robust all-round protective grating especially for use with timber



Optimal camera monitoring

of all safety-relevant areas*



Safe ascent and robust handles

Robust uppercarriage railing for high work safety during maintenance work



Powerful LED spotlights

for optimal illumination of the work area

Sliding door

Easier access to the cab through the side cab door and optional tread next to the cab.

Stability

Wide single tires and 4-point outriggers for high stability

* Cameras are installed as standard on the right-hand side and to monitor the rear area. Additional cameras, e.g. on the stick, are available on request.



MAXIMUM COMFORT.

Everything in view

The spacious cab provides an all-round view, allowing you to comfortably see your entire working area. The windshield of the cab runs right through to the floor panel so that the view to the front is unrestricted. Together with the two large side windows, this provides a panoramic view of the entire work area.

Easy control

The intelligent SENCON control system gives you quick and easy feedback on the machine's condition. Thanks to the intuitive user interface, it has never been easier to monitor energy consumption and utilization, control the desired working modes and contribute towards reducing operating costs.

For your health

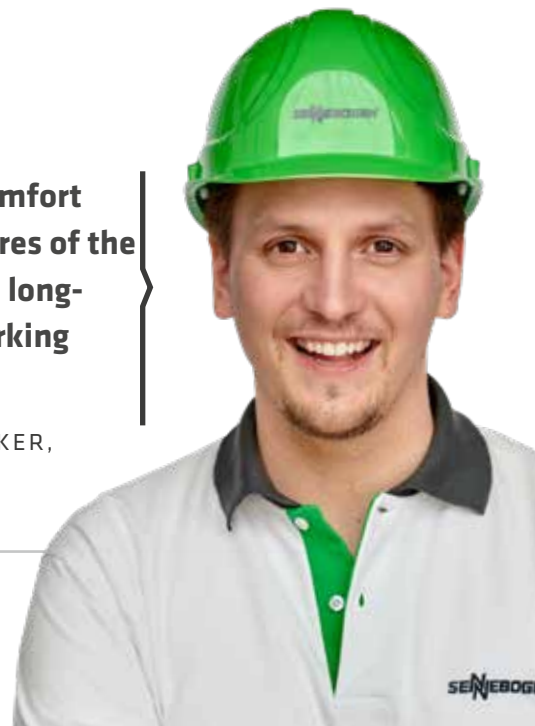
Operators spend many hours in their working position. The back-friendly comfort seat, adjustable armrests, joysticks that sit comfortably in the hand, and the optimally arranged controls make daily work as easy as possible.

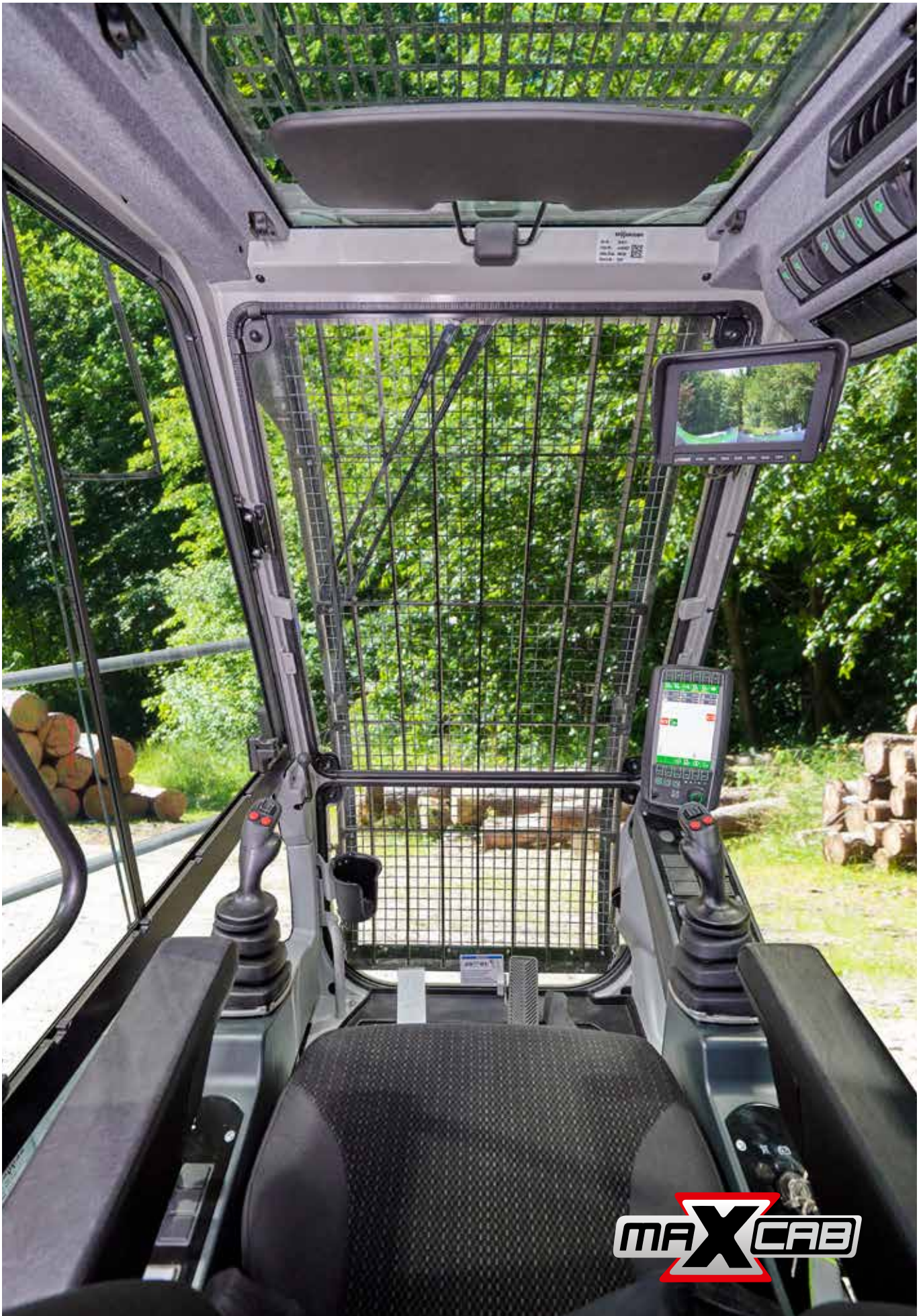
Pleasant indoor climate

Whether in warmer areas or processing timber in sub-zero temperatures, you can enter a work space with a comfortable temperature every day and concentrate on the essentials of work thanks to automatic heating and air conditioning.

"The operator comfort and safety features of the Maxcab ensure a long-term relaxed working environment."

MATTHIAS ÜBELACKER,
Head of the Timber
BUSINESS UNIT





MAXCAB

PROFESSIONAL FLEET MANAGEMENT

SENtrack

1. Reduce service costs

The dashboard is used to monitor the machine and its main operating parameters (temperatures, consumption). If key figures deviate significantly from the target value, preventive maintenance can be arranged.

2. Reduce consumption

You will receive daily updated insights into your fleet processes: Easily identify and optimize times when machines are idle or change set parameters when machines are underloaded to reduce consumption.

3. Improve productivity

With just a few clicks, you can recognize and optimize machine capacity, and if necessary analyze routes and thus profitably develop your planning in tree maintenance or timber harvesting.

4. Safeguard your investment

Practical alarm messages inform you about critical machine conditions. In the event of irregular movements, the machine can also easily be deactivated remotely.

"What if you could receive real-time data from all your machines with just one click and so increase your productivity? SENNEBOGEN's SENtrack telematic system makes this possible."



MAINTENANCE AND SERVICE.

KEEP IT SIMPLE. WITH MANAGEABLE TECHNOLOGY.



Reliable and practical technology makes life easier. Where electronics add no value, we rely on hydraulics and electrical systems.



We make you happy, not reliant. With cost-effective components and fewer process steps, you can take care of your own machine.



The most important components, such as the accumulator module or the electrical distributor, are all easily accessible from a central point for straightforward checking and troubleshooting.



The SENCON control system supports you with diagnostics and makes troubleshooting easier. So your machine is back in action more quickly.



All maintenance and service points are arranged clearly and easily accessible. The clear labeling of components makes finding your way around easy.

TECHNICAL DATA, EQUIPMENT

MACHINE TYPE

MODEL (TYPE) 728

ENGINE

TYPE Stage V:
Cummins B6.7 FR95889
Rated power: 129 kW/2200 rpm
Operating point standard:
140 kW/1700 rpm
Operating point ECOt: 133 kW/1500 rpm

Direct injection, turbocharged, inter-cooling, reduced emissions, Eco mode (1800 rpm), automatic idling, automatic stop after 5 minutes, fuel pre-warming

COOLING Water-cooled, cooling fan with automatic reversal at intervals

FUEL FILTER Including electrically (24V) heated water separator

AIR FILTER Dry filter with integrated pre-separator, automatic dust extraction, contamination indicator

FUEL 450 l

DEF TANK 45 l

ELECTRICAL SYSTEM 24 V

BATTERIES 2 x 150 Ah

OPTIONS Engine coolant preheating
Electric fuel pump
Jump start pole
Batteries with increased capacity
Battery preheating
Additional cyclone pre-separator during increased dust load

UPPERCARRIAGE

DESIGN Torsion-resistant upper frame with end shields all the way from boom linkage to counterweight for optimized force transmission, precision-crafted, steel bushings for boom mounting. Lockable storage space, excellent design, low noise emission values

CENTRAL LUBRICATION Automatic central lubrication for work equipment and live ring track

ELECTRIC Central electrical distributor, battery disconnect switch

COOLING SYSTEM 3-circuit cooling system with high cooling output, thermostatically regulated fan drive for oil cooler and water cooler, automatic cooling fan reversal for cleaning

SAFETY Camera, right and rear viewing area
Emergency control to guarantee the machine availability in restricted operation by bypassing the main functions

OPTIONS Slew brake via foot pedal
Bar graph pressure display
Circumferential uppercarriage railing, folding for transport
Light packages with LEDs
Fire extinguisher
Electrical hydraulic tank preheating with circulation pump
Low temperature packages
SENtrack telematic system
Platform with railing next to cab



TECHNICAL DATA, EQUIPMENT

HYDRAULIC SYSTEM / HYDRAULICS

LOAD-SENSING / LDUV HYDRAULIC SYSTEM FOR WORK AND TRAVEL SYSTEMS

PUMP TYPE	Swash plate-type variable-displacement piston pump, load pressure-independent flow distribution for simultaneous, independent control of work functions
PUMP CONTROL	Zero stroke control, demand flow control, pumps only pump oil according to actual consumption, pressure cut-off, load limit control
SUPPLEMENTARY HYDRAULICS	Large-scale supplementary hydraulics and additional piping to independently drive different equipment without impairing the main functions
DELIVERY RATE	max. 205 l/min.
OPERATING PRESSURE	up to 350 bar
FILTRATION	High-performance filtration with long change interval
HYDRAULIC TANK	410 l
CONTROL SYSTEM	Proportional, precision hydraulic control of the movements, 2 hydraulic servo joysticks for work functions, additional functions via switches and foot pedals
SAFETY	Hydraulic circuits safeguarded with safety valves Hydraulic accumulator for emergency lowering of equipment and cab when engine is at standstill Pipe burst safety valves for stick cylinders and lift cylinders
OPTIONS	Organic oil – environmentally friendly Supplementary hydraulics package SENNEBOGEN HydroClean micro-filter system (3 µm) with water separator Pressure filter for separate variable displacement pump for equipment Auxiliary section on main control block ToolControl for controlling various equipment Hydraulic preparation for equipment

SLEWING DRIVE

GEARBOX	Planetary gears with axial piston engine, integrated brake valves
PARKING BRAKE	Spring-loaded, hydraulically ventilated multi-disk safety brake
SLEWING RING	Internal toothing, strong ball bearing slewing ring, sealed
TORQUE	80 kNm
SLEWING SPEED	0-8 rpm, variable. Hydraulic brake valves integrated into engine ensure wear-free braking.

CAB



CAB TYPE	E270 hydraulically elevating cab
CAB FEATURES	Automatic heating/air conditioning with central control unit, SENNEBOGEN SENCON control and diagnostic system, sliding door incl. sliding window, excellent ergonomics, heated seat, vibration-damped, air-sprung comfort seat, windscreen made of bulletproof glass, fresh air filter/recirculated-air filter, joystick steering
OPTIONS	Tiltable cab, 30° Carbon filter Auxiliary heating system with timer Active seat climate control Steering wheel control with adjustable steering column Windshield wipers with wipe-wash function for front and rear windows Bulletproof glass in skylight Safety side window and rear window Sunblind for skylight and windshield Platform next to railing (bolted) FOPS protective roof grating Protective front guard Radio with USB port, MP3 and Bluetooth function Protective cover for cab seat Special arrangement of the joysticks and pedals Cooling box behind the operator's seat (electric)

TECHNICAL DATA, EQUIPMENT

EQUIPMENT

DESIGN	Box design with large mounting points for a long service life in sealed and dirt-protected design. Very large mounting points with low-maintenance, sealed special bushings, precision-crafted.
MAXIMUM RANGE	up to 21 m with equipment
CYLINDERS	Special hydraulic cylinder with hydraulic end position damping, optimized kinematics for high lifting power. The material handling attachment is specifically designed for high-performance applications.
CENTRAL LUBRICATION	Automatic central lubrication system
OPTIONS	Mounted equipment ex works Transport lock for equipment



Optional: Platform next to cab with railing



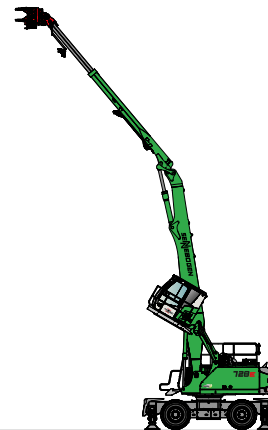
Optional: Radio with USB port, MP3 and Bluetooth

UNDERCARRIAGE

DESIGN	Strong MP28E mobile undercarriage with combination of stabilizer blade and outrigger, hydraulically locking pendulum steering axle. Pendulum axle cylinder with pipe-fracture safety valves, individual outrigger actuation
DRIVE	All-wheel drive powered by two direct-mounted variable-displacement hydraulic engines incl. automatically operated brake valve. Strong planetary axles with integrated steering cylinders, 2-circuit multi-disk service brake, switch steering direction, switch driving direction
PARKING BRAKE	Spring-loaded multi-disk brake
TIRES	550/65-R25, 4-way single pneumatic tires
SPEED	0 - 20 km/h
OPTIONS	Set-up for trailer coupling Protection for travel drive Limited road approval

OPERATING WEIGHT

MASS	approx. 34,500 kg basic model 728 M with sliding panel, including equipment
NOTE	Operating weight varies by model and equipment. Subject to technical changes!





728 E with VOSCH 1600-7T grab saw
Location: Germany



728 E with Albach TFZ grab saw 90-360°
Location: USA

LOAD RATINGS



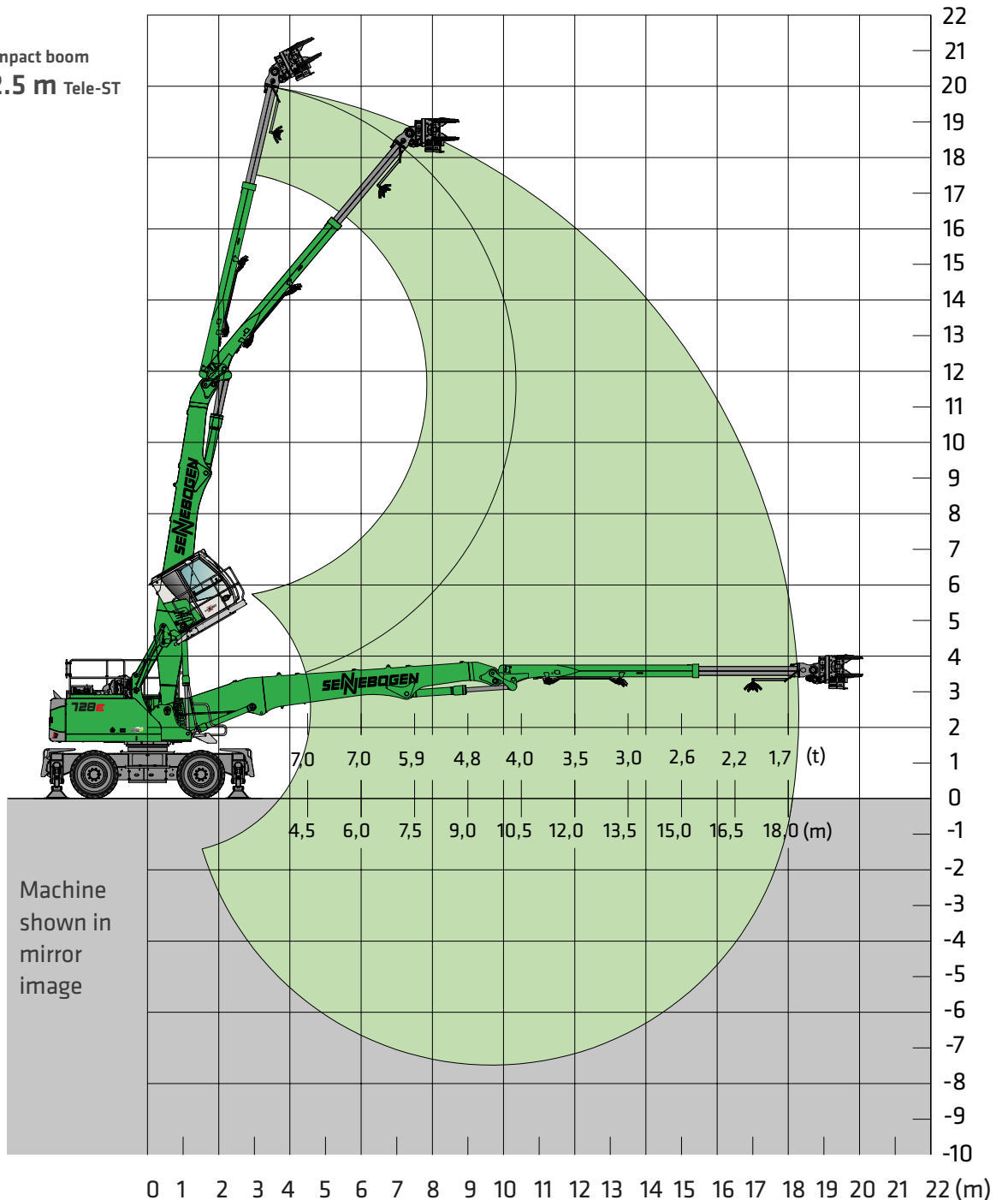
MP28 E



MAXCAB
E270 30° tilting



9.2 m compact boom
6.0 m+2.5 m Tele-ST



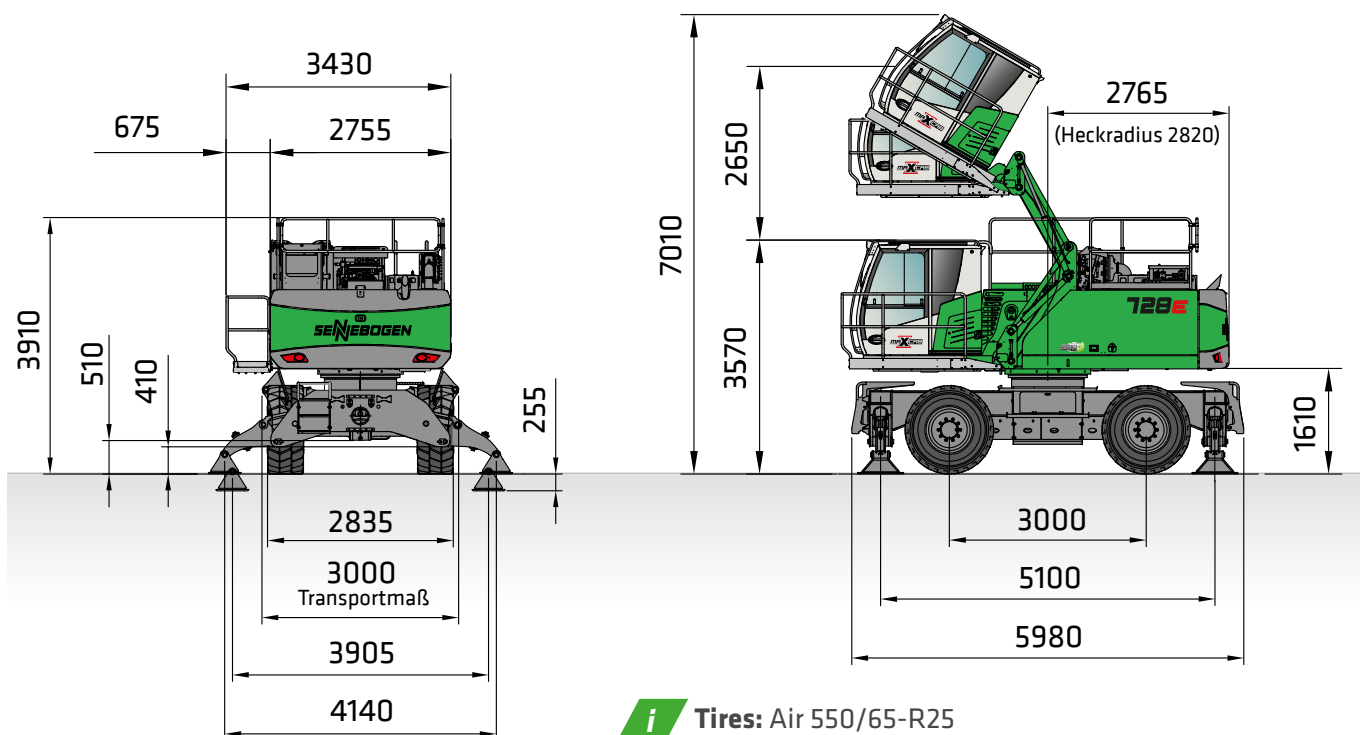
LOAD RATINGS

Machine shown in mirror image

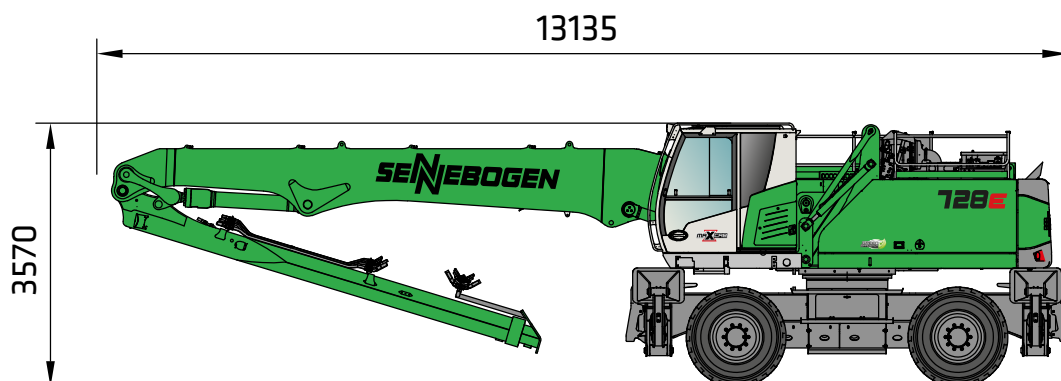
Notes:

All load ratings are given in tons (t) brought to bear at the end of the stick without equipment on stable, firm and level ground. Equipment such as grippers, load hooks, etc. are part of the specified load ratings. The values given are valid for stationary use with a work area of 360°, on wheels, without supports and with blocked pendulum axles. The values in brackets [] are valid for stationary use with an uppercarriage as long as the undercarriage, on wheels, without supports and with blocked pendulum axles. In line with ISO 10567, they amount to 75 % of the static tipping load or 87 % of the hydraulic lifting force. The values in brackets () are valid for travel drive with an uppercarriage as long as the undercarriage, on wheels, without support, and on wheels with active pendulum axles. In line with DIN EN 474-5, they amount to 60 % of the static tipping load. If the machine is being used in stationary mode for lifting applications, as per DIN EN 4745, it must be fitted with pipe fracture safety devices on the boom lifting cylinders and an overload warning device.

DIMENSIONS



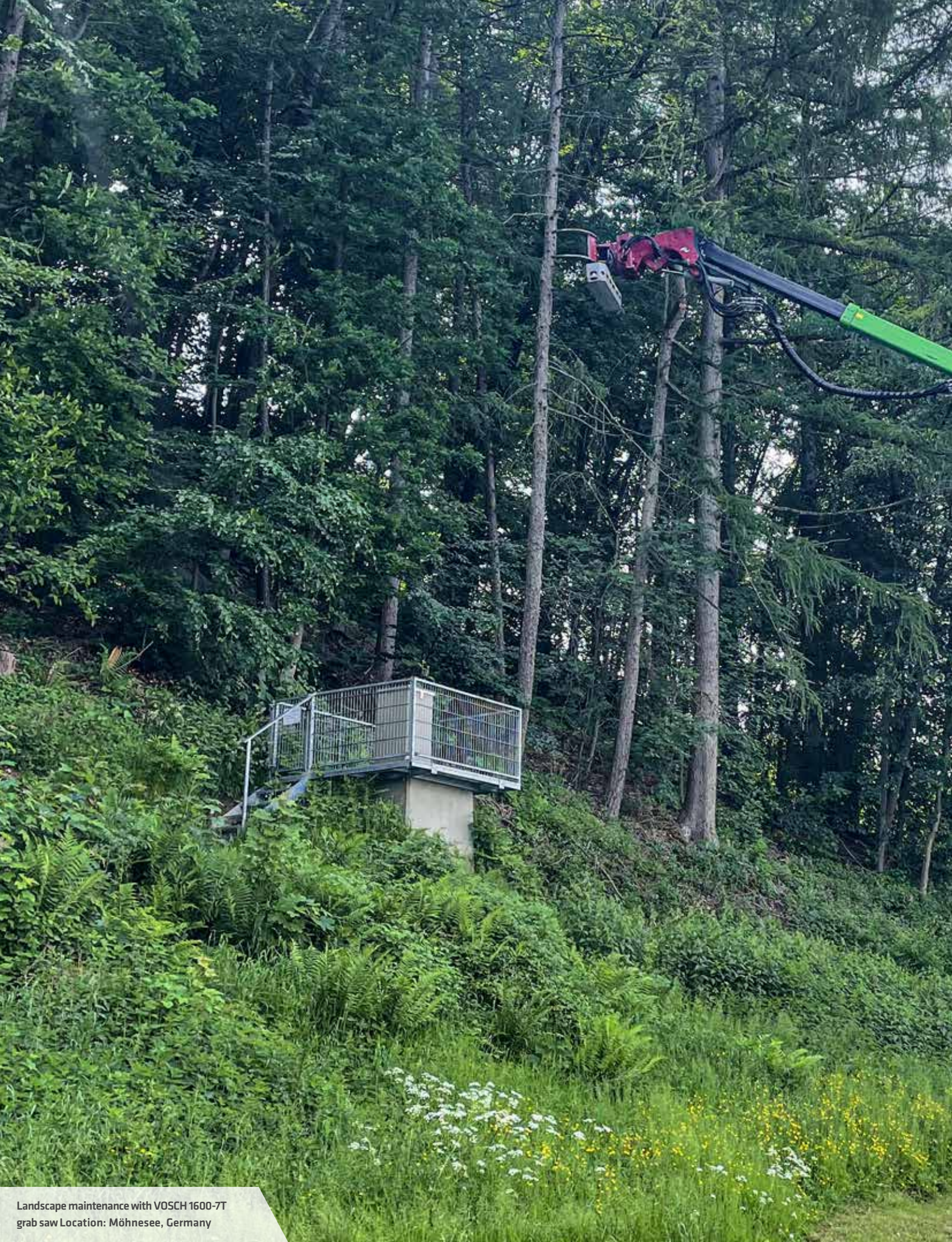
728 E E270 30° TILTING



728 E E270 (ELEVATING), KA 9.2 m, TELE-ST 6.0 m+2.5 m MP28, 4-POINT OUTRIGGERS

Dimensions in [mm]

Subject to technical changes.



Landscape maintenance with VOSCH 1600-7T
grab saw Location: Möhnesee, Germany





SENNEBOGEN ACADEMY

Anxious to expand knowledge as success is based on knowledge. In the SENNEBOGEN Academy we place great importance on ensuring knowledge flows powerfully.

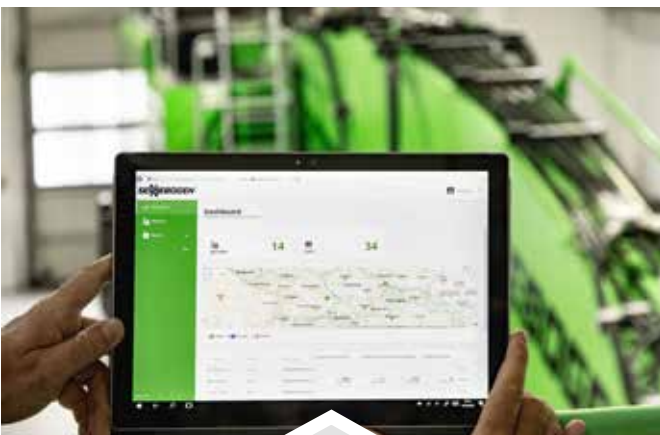
➔ www.sennebogen-academy.com



SERVICE AND MAINTENANCE

Comprehensive customer service. And supply of spare parts. Service is a TOP priority for us.

➔ www.sennebogen.com/kundendienst



SENtrack

Manage your fleet efficiently with SENtrack: Use information that would otherwise stay hidden and increase your efficiency.

➔ www.sennebogen.com/de/sentrack



RENTAL & USED

Discover the unique range of rental machines available from SENNEBOGEN Rental & Used. Find your rental machine here:

➔ www.sennebogen-rental-used.com

JOIN OUR OPERATORS' CLUB

The spotlight is on you and your machine! We focus on exclusive information, sharing experiences with other SENNEBOGEN operators as well as fun and enthusiasm.

All the benefits here ➔ www.sennebogen.com/operators-club



MOVE BIG THINGS - WITH US!



over **69**
years of
experience

100 %
family
company

over **1600**
experienced
specialists worldwide

4
production plants
in Germany

over **180**
sales and service partners
around the world

11
different
telecranes



Telehandler
4-5.5 t

Balancer
130-300 t

Material handler
17-420 t

Duty cycle crane
13.5-300 t

Crawler crane
50-300 t

Telecrane
16-130 t

Port crane
300 t

Dieser Katalog beschreibt Maschinenmodelle, Ausstattungsumfänge einzelner Modelle und Konfigurationsmöglichkeiten (Serienausstattung und Sonderausstattung) der von der SENNEBOGEN Maschinenfabrik GmbH gelieferten Maschinen. Geräteabbildungen können Sonder- und Zusatzausstattungen enthalten. Je nach Land, in das die Maschinen geliefert werden, können Abweichungen von der Ausstattung möglich sein, insbesondere bzgl. der Serien- und Sonderausstattung. Alle verwendeten Erzeugnisbezeichnungen können Marken der SENNEBOGEN Maschinenfabrik GmbH oder anderer, zuliefernder Unternehmen sein, deren Benutzung durch Dritte für deren Zwecke die Rechte der Inhaber verletzen kann.

Bitte informieren Sie sich bei Ihrem SENNEBOGEN Vertriebspartner vor Ort über die angebotenen Ausstattungsvarianten. Gewünschte Leistungsmerkmale sind nur dann verbindlich, wenn sie bei Vertragsschluss ausdrücklich vereinbart werden. Liefermöglichkeiten und technische Änderungen vorbehalten. Alle Angaben sind ohne Gewähr. Ausstattungsänderungen und Weiterentwicklungen vorbehalten. © SENNEBOGEN Maschinenfabrik GmbH, Straubing/Deutschland. Nachdruck, auch auszugsweise, nur mit schriftlicher Genehmigung der SENNEBOGEN Maschinenfabrik GmbH, Straubing/Deutschland.

SENNEBOGEN
Maschinenfabrik GmbH
Hebbelstraße 30
94315 Straubing, Germany

 www.sennebogen.com

MOVE BIG THINGS

VERTRIEB SENNEBOGEN
Green Line Vertrieb
Tel. +49 9421 540-146
materialhandling@sennebogen.de

ERSATZTEILZENTRUM
Ersatzteil-Bestellungen
spareparts@sennebogen.de

KUNDENDIENST
Technische Unterstützung
service@sennebogen.de

