



Volvo Construction Equipment

# EC750D

Volvo Excavators 72.7-74.7 t 508 hp



# A passion for performance

At Volvo Construction Equipment, we're not just coming along for the ride. Developing products and services that raise productivity – we are confident we can lower costs and increase profits for industry experts. Part of the Volvo Group, we are passionate about innovative solutions to help you work smarter – not harder.

## Helping you to do more.

Doing more with less is a trademark of Volvo Construction Equipment. High productivity has long been married to low energy consumption, ease of use and durability. When it comes to lowering life-cycle costs, Volvo is in a class of its own.

## Designed to fit your needs.

There is a lot riding on creating solutions that are suited to the particular needs of different industry applications. Innovation often involves high technology – but it doesn't always have to. Some of our best ideas have been simple, based on a clear and deep understanding of our customers' working lives.



## You learn a lot in 180 years.

Over the years, Volvo has advanced solutions that have revolutionized the use of construction equipment. No other name speaks Safety louder than Volvo. Protecting operators, those around them and minimizing our environmental impact are traditional values that continue to shape our product design philosophy.

## We're on your side.

We back the Volvo brand with the best people. Volvo is truly a global enterprise, one that is on standby to support customers quickly and efficiently – wherever they are.

## We have a passion for performance.



Volvo Trucks



Renault Trucks



Mack Trucks



UD Trucks



Volvo Buses



Volvo Construction Equipment



Volvo Penta



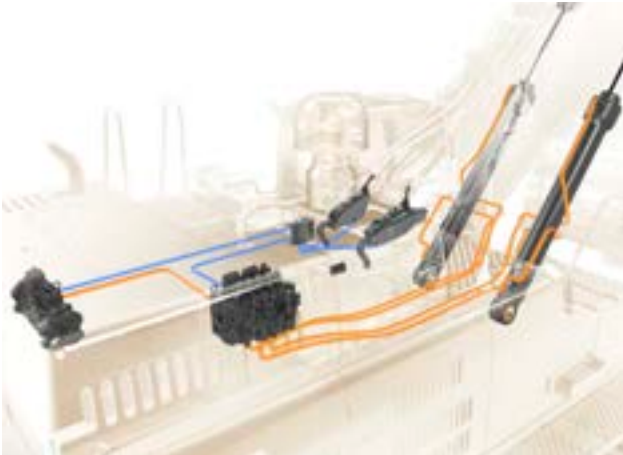
Volvo Financial Services

# Gain more, pay less

Secure more profit and reduce your Total Cost of Ownership by increasing productivity and fuel efficiency. Do more for less on your job site with the EC750D's Volvo D16 engine, which delivers increased horsepower and fuel efficiency. The machine's electro hydraulic system provides high productivity and excellent control.

## Electro hydraulic system

Enhance fuel efficiency while increasing productivity and performance. The new and improved Volvo designed electro-hydraulic system uses intelligent technology to control on-demand flow and reduces internal losses in the hydraulic circuit. This provides superior digging force, shortens cycle times and increases controllability.



## Increased bucket capacity

The EC750D delivers more tons per hour, fitted with larger buckets for faster and more efficient on site production. To gain profitability, the increased horsepower, hydraulic pressure and flow enable the machine to perform at optimal capacity, loading more material in one load for greater productivity.



## Work modes

Volvo's unique integrated work mode system now includes the G4 mode for optimum fuel efficiency and performance, incorporating the work modes within the throttle control. When the operator selects the best work mode for the task at hand - I (idle), F (fine), G (General), H (Heavy) and P (Power) - the rpm is already set for maximum efficiency.



## Volvo Cab

The comfortable, low noise environment and adjustable seat increases operator efficiency and capacity to improve production. Volvo's industry-leading cab boasts superior visibility from large expanses of front and side glass with slim cab pillars and the spacious environment provides ample storage and leg room.

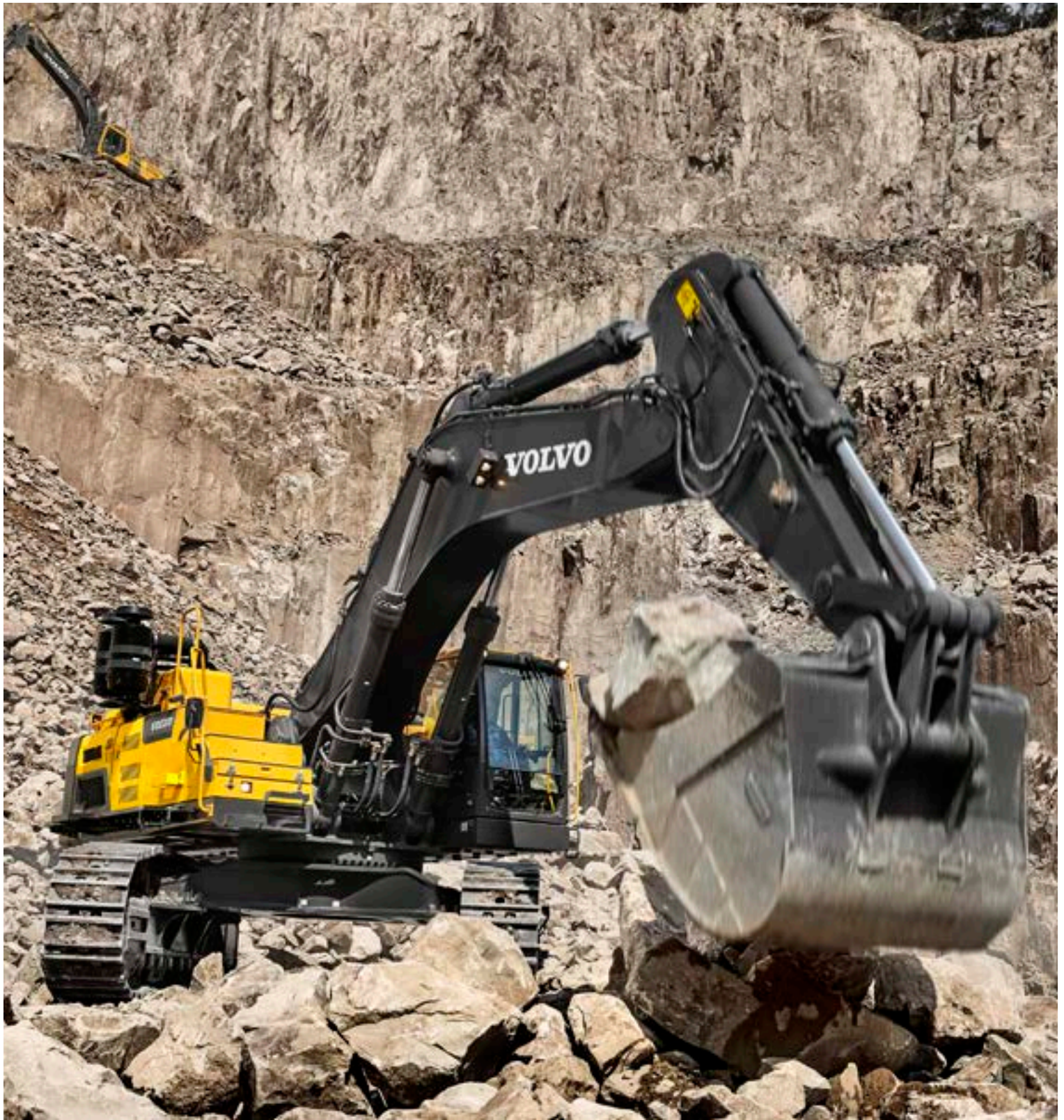




# VOLVO D16 ENGINE



Featuring advanced technology and built on decades of experience, the new Volvo D16 engine delivers 11% increased horsepower for the ultimate combination of high productivity and increased fuel efficiency.



# DIGGING FORCE



Get the job done faster with ease because of the EC750D's constant high system pressure, which delivers greater digging force and reduced cycle times, particularly when working with hard and heavy materials.

# A star performance

The EC750D's outstanding digging force gets the job done whether you're working at a mine, quarry or in heavy construction applications. The EC750D digs, swings and loads using the most efficient technology and its improved stability, tractive force and Eco Mode, delivers low fuel consumption and improved cycle times for a star performance.

## Improved stability

Improve your stability and work in more challenging environments with the machine's wider track gauge and heavier counterweight, which both contribute towards a well-balanced and solid machine when operating in adverse terrains.



## Tractive force

For more power, better productivity and ease of moving around your jobsite, the machine's high system pressure and durable track ensure impressive tractive force when climbing gradients and travelling over unstable ground. Perform more tasks in hard to reach areas of your jobsite.



## ECO Mode

Save fuel without any loss of performance in most operating conditions. Volvo's unique ECO Mode optimizes the hydraulic system to reduce flow and pressure losses, for improved fuel efficiency. ECO Mode is automatically selected but can be switched off via the keypad.



## Improved cycle time

Get more done in less time. The Volvo hydraulic system, leads to a more powerful and combined pump flow to the bucket for smooth operation, improved cycle time and increased fuel efficiency. The optional boom float delivers more control, fast minimizes operation costs and maximizes uptime.

# Strong, solid and superior

Use the best machine for the job in tough working conditions. The EC750D is built using durable Volvo components, a reinforced structure and machine protection for a longer life in tough environments. Robust parts and easy service access increase uptime and keep maintenance to a minimum to reduce operating costs.

## Durable Volvo components

Volvo's tried and tested components have proven to be reliable even in the toughest applications, delivering maximum uptime. Volvo's commitment to its development process and quality levels ensures that its rigorous testing procedures produce the best quality components and machines.



## Reinforced structure

The reinforced upper and lower frame are built to withstand tougher conditions for improved durability and reliability. The reinforced idler frame, track links and bottom rollers are designed and built for constant impact, leading to machine longevity and a sustained level of uptime in demanding applications.



## Easy service access

Grouped filters and the electric distribution box are easily accessed via the wide-opening compartment doors and walkways. Greasing points can all be accessed in one machine position and the EC750D's design facilitates easy cleaning, inspection and maintenance for increased uptime.



## Undercover protection

For increased durability and to protect components, the built-in heavy-duty plate provides additional protection to the underside of the machine in hard applications – preventing damage from rocks and debris.







# BOOM AND ARM



The reinforced heavy-duty boom and arm built from high strength tensile steel increases reliability and machine uptime, even in severe applications. Steel strips are welded under the arm to further increase protection and various boom and arm configurations are available to suit any bucket size or application.



# ATTACHMENTS



Volvo's attachments have been purpose-built to work in perfect harmony with Volvo machines, forming one solid, reliable unit. With functions and properties ideally matched, Volvo attachments are an integrated part of the excavator for which they're intended – delivering maximum productivity.

# Strength in numbers

Maximize your productivity and profitability with Volvo's EC750D excavator and a range of durable attachments. Increase your versatility, access more applications and perform a variety of tasks on one job – all while experiencing faster cycle times and excellent control.

## HD Buckets

Volvo's heavy-duty bucket, built using wear resistant plates, excels at digging compact materials including loose rock, hard clay and gravel. It's perfect for quarrying and mining applications and is made out of reinforced high quality durable materials for a long life and superior performance.



## Universal Quick Coupler

Volvo offers a Universal quick coupler which perfectly matches Volvo's bucket range. The Volvo Universal quick coupler also picks up a variety of attachments from various manufacturers and the Volvo front-pin lock quick coupler meets the latest safety regulations.



## Genuine Volvo Wear Parts

The positioning of Genuine Volvo wear parts cover critical areas, which protect the bucket and prolongs its lifespan. A wide range of wear parts are offered to protect your complete bucket, such as teeth, adapter, segments, side cutter and shroud. Strong high tensile steel has been used to increase the bucket's durability.



## Attachment Management System

The password protected attachment management system allows storage for up to 20 different attachments. The system allows the operator to pre-set hydraulic flow and pressure inside the cab through the monitor, which ensures the use of various attachments for increased versatility.



# Tough it out

## ECO Mode

Save fuel without any loss of performance in most operating conditions with Volvo's unique ECO Mode.

## BOOM AND ARM



The reinforced heavy-duty boom and arm increases reliability and machine uptime, even in challenging applications.

## Electro hydraulic system

The electro-hydraulic system uses intelligent technology to control on-demand flow and reduce losses in the hydraulic circuit.

## Durable Volvo components

Volvo's tried and tested components have proven to be reliable even in the toughest applications.

## DIGGING FORCE



The constant high system pressure delivers greater digging force and reduced cycle times to get the job done faster.

## ATTACHMENTS



A range of Volvo attachments including hard wearing buckets are an integrated part of the excavator, delivering maximum productivity.

## Increased bucket capacity

The EC750D delivers more tons per hour, fitted with larger buckets for faster and more efficient on site production.



## CUSTOMER SUPPORT AGREEMENTS



Customer Support Agreements offer preventive maintenance, total repairs and a number of uptime services.

### Volvo Cab

The comfortable, low noise environment and adjustable seat increases operator efficiency and capacity to improve production.

## VOLVO D16 ENGINE



The high quality D16 engine delivers 11% increased horsepower for high productivity and increased fuel efficiency.



### Reinforced structure

The reinforced upper and lower frame are built to withstand tougher conditions for improved durability and reliability.

### Easy service access

The EC750D's design facilitates easy cleaning, inspection and maintenance for increased uptime.

# Adding value to your business

Being a Volvo customer means having a complete set of services at your fingertips. Volvo can offer you a long-term partnership, protect your revenue and provide a full range of customer solutions using high quality parts, delivered by passionate people. Volvo is committed to increasing the positive return on your investment and maximising uptime.



## Complete Solutions

Volvo has the right solution for you. So why not let us provide all your needs throughout the whole life cycle

of your machine? By listening to your requirements, we can reduce your total cost of ownership and increase your revenue.



## Genuine Volvo Parts

Our attention to detail is what makes us stand out. This proven concept acts as a solid investment in your machine's future. Parts are extensively tested and approved because every part is vital for uptime and performance. Only by using Genuine Volvo Parts, can you be sure that your machine retains the renowned Volvo quality.



## UAT Service Network

In order to respond to your needs faster, a Volvo expert is on the way to your job site from one of our Volvo facilities. With our extensive infrastructure of technicians, workshops and dealers, Volvo has a comprehensive network to fully support you using local knowledge and global experience.





# CUSTOMER SUPPORT AGREEMENTS



The range of Customer Support Agreements offer preventive maintenance, total repairs and a number of uptime services. Volvo uses the latest technology to monitor machine operation and status, giving you advice to increase your profitability. By having a Customer Support Agreement you are in control of your service costs.

# Volvo EC750D in detail

## Engine

The Volvo diesel engine delivers lower emissions, superior performance and fuel efficiency. The engine uses precise, high-pressure fuel injectors, turbo charger and intercooler, and electronic engine controls to optimize machine performance. Air Filter: 3-stage with precleaner. Automatic Idling System: Reduces engine speed to idle when the levers and pedals are not activated resulting in less fuel consumption and low cab noise levels.

Engine	Volvo	D16E
Max power at	r/s	30
	r/min	1 800
Net, ISO 9249/SAE J1349	kW	374
	hp	508
Gross, ISO 14396/SAE J1995	kW	385
	hp	523
Max torque at engine speed	N m	2 500
	r/min	1 340
No. of cylinders		6
Displacement	L	16.1
Bore	mm	144
Stroke	mm	165

## Electrical System

High-capacity electrical system that is well protected. Waterproof double-lock harness plugs are used to secure corrosion-free connections. The main relays and solenoid valves are shielded to prevent damage. The master switch is standard. Contronics provides advanced monitoring of machine functions and important diagnostic information.

Voltage	V	24
Batteries	V	2 x 12
Battery capacity	Ah	210
Alternator	V/Ah	28 / 80

## Service Refill

Fuel tank	L	840
Hydraulic system, total	L	655
Hydraulic tank	L	350
Engine oil	L	49
Engine coolant	L	66
Slew reduction unit	L	2 x 6.8
Travel reduction unit	L	2 x 13.5

## Swing System

The swing system uses an axial piston motors, driving a planetary gearbox for maximum torque. An automatic holding brake and anti-rebound valve are standard.

Max. slew speed	r/min	7
Max. slew torque	kN m	275.40

## Drive

Each track is powered by an automatic two-speed shift travel motor. The track brakes are multi-disc, spring-applied and hydraulic released. The travel motor, brake and planetary gears are well protected within the track frame.

Max. drawbar pull	kN	478
Max. travel speed	km/h	2.9 / 4.6
Gradeability	°	35

## Undercarriage

The undercarriage has a robust X-shaped frame. Greased and sealed track chains are standard.

Track shoes		2 x 48
Link pitch	mm	260
Shoe width, double grouser	mm	650/ 750/ 900
Bottom rollers		2 x 8
Top rollers		2 x 3

## Hydraulic System

The new electro-hydraulic system and new MCV (main control valve) use intelligent technology to control on-demand flow for high-productivity, high-digging capacity and excellent fuel economy. The summation system, boom, arm and swing priority along with boom, arm and bucket regeneration provides optimum performance.

The following important functions are included in the system:

Summation system: Combines the flow of both hydraulic pumps to ensure quick cycle times and high productivity.

Boom priority: Gives priority to the boom operation for faster raising when loading or performing deep excavations.

Arm priority: Gives priority to the arm operation for faster cycle times in leveling and for increased bucket filling when digging.

Swing priority: Gives priority to swing functions for faster simultaneous operations.

Regeneration system: Prevents cavitation and provides flow to other movements during simultaneous operations for maximum productivity.

Holding valves: Boom and arm holding valves prevent the digging equipment from creeping.

Main pump. Type 2 x variable displacement axial piston pumps

Maximum flow	L/min	2 x 450
--------------	-------	---------

Pilot pump. Type Gear pump

Maximum flow	L/min	1 x 34.5
--------------	-------	----------

## Hydraulic Motors

Travel: Variable displacement axial piston motor with mechanical brake  
Slew: Fixed displacement axial piston motor with mechanical brake

Relief valve setting

Implement	MPa	34.3
Travel circuit	MPa	34.3
Slew circuit	MPa	26.5
Pilot circuit	MPa	3.9

## Hydraulic Cylinders

Mono boom		2
Bore and Stroke	ø x mm	190 x 1 790
Arm		1
Bore and Stroke	ø x mm	215 x 2 070
Bucket		1
Bore and Stroke	ø x mm	190 x 1 450
ME Bucket		1
Bore and Stroke	ø x mm	200 x 1 450

## Cab

The operator's cab has easy access via a wide door opening. The cab is supported on hydraulic dampening mounts to reduce shock and vibration levels. These along with sound absorbing lining provide low noise levels. The cab has excellent all-round visibility. The front windshield can easily slide up into the ceiling, and the lower front glass can be removed and stored in the side door.

Integrated air-conditioning and heating system: The pressurized and filtered cab air is supplied by an automatically-controlled fan. The air is distributed throughout the cab from 14 vents.

Ergonomic operator's seat: The adjustable seat and joystick console move independently to accommodate the operator.

The seat has 12 different adjustments plus a seat belt for the operator's comfort and safety.

## Sound Level

Sound level in cab according to ISO 6396

LpA	dB(A)	72
-----	-------	----

External sound level according to ISO 6395 and EU Noise Directive (2000/14/EC) and 474-1:2006 +A1:2009

LwA	dB(A)	110
-----	-------	-----



# Specifications

## GROUND PRESSURE

Description		EC750D								
		Boom 6.6m, Arm 2.9m, Bucket 4 850kg			Boom 7.7 m, Arm 2.9m, Bucket 4 000kg			Boom 7.7 m, Arm 3.55m, Bucket 4 200kg		
		Counterweight 12 700kg			Counterweight 12 700kg			Counterweight 12 700kg		
Shoe width	Operating weight	Ground pressure	Overall width	Operating weight	Ground pressure	Overall width	Operating weight	Ground pressure	Overall width	
mm	kg	kPa	mm	kg	kPa	mm	kg	kPa	mm	
Double grouser	650	73 180	106.4	4 185	73 000	106.1	4 185	73 400	106.7	4 185
	750	73 880	93.1	4 190	73 700	92.8	4 190	74 100	93.3	4 190
	900	74 980	78.7	4 340	74 800	78.5	4 340	75 200	78.9	4 340

## BUCKET SELECTION GUIDE

Bucket type		Capacity	Cutting width	Tip radius	Weight	Teeth	EC750D		
							6.6m boom		7.7m boom
							650mm shoe, 12 700kg counterweight		
		m <sup>3</sup>	mm	mm	kg	EA	2.9m	2.9m	3.55m
Direct fit Buckets (V4)	General purpose	3.30	1 720	67	3 280	5	C	C	C
		4.00	2 000	78	3 690	5	C	C	C
		4.40	2 150	84	3 986	5	C	C	B
		4.65	2 250	88	3 986	5	C	C	B
		4.85	2 330	91	4 099	5	C	B	B
	5.16	2 450	96	4 311	6	C	B	A	
	Heavy duty	3.30	1 720	67	3 666	4	D	D	D
		4.00	2 000	78	4 125	5	D	D	C
		4.40	2 150	84	4 324	5	D	C	B
		4.65	2 250	88	4 439	5	D	B	B
4.85		2 330	91	4 590	5	D	B	A	
5.16	2 450	96	4 832	6	D	B	A		
Direct fit Buckets (V1) *China only	Heavy duty	3.30	2 100	82	3 746	5	D	D	D
		3.70	2 300	90	3 971	5	D	D	D
		4.00	2 000	78	4 616	5	D	D	B
		4.60	2 240	87	4 969	5	D	B	A

Please consult with your Volvo dealer for the proper match of buckets and attachments to suit the application.

The recommendations are given as a guide only, based on typical operation conditions.

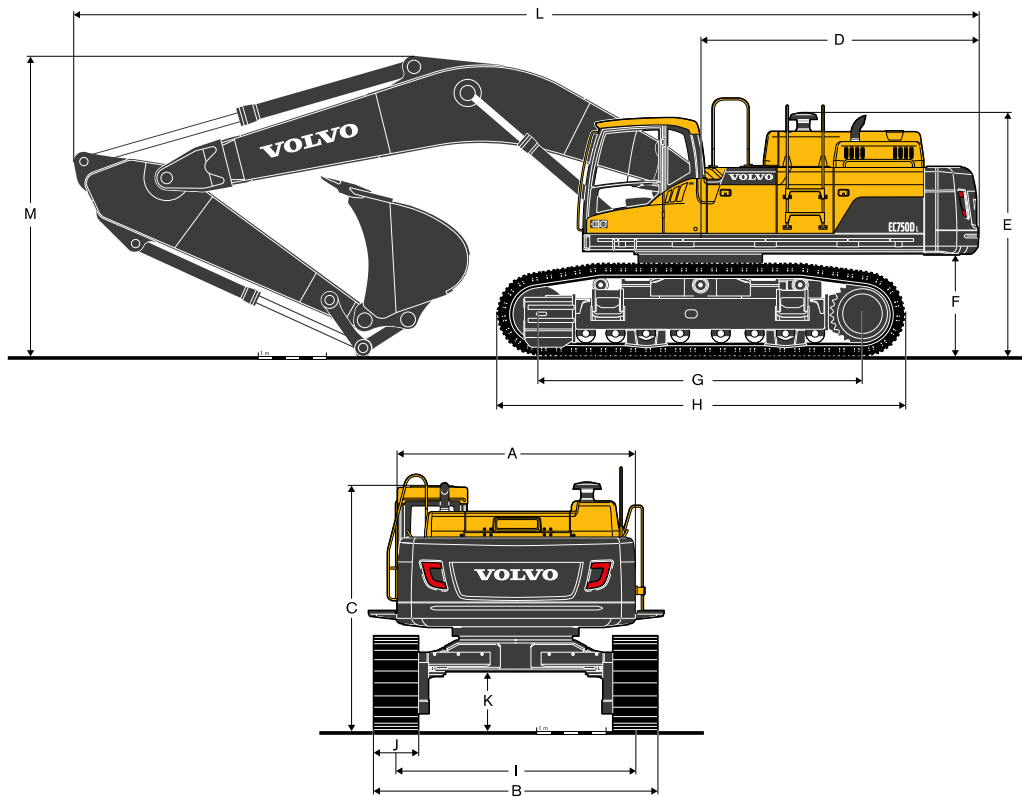
Bucket capacity based on ISO 7451, heaped material with a 1:1 angle of repose.

### Maximum material density

A	1 200~1 300 kg/m <sup>3</sup>	Coal, Caliche, Shale
B	1 400~1 600 kg/m <sup>3</sup>	Wet earth and clay, Limestone, Sandstone
C	1 700~1 800 kg/m <sup>3</sup>	Granite, Wet sand, Well blasted rock
D	1 900 kg/m <sup>3</sup> ~	Wet mud, Iron ore

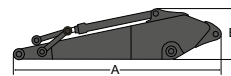
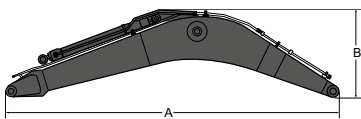
# Specifications

## DIMENSIONS



Description	Unit	EC750D		
		6.6	7.7	3.55
<b>Boom</b>	<b>m</b>	<b>6.6</b>	<b>7.7</b>	<b>3.55</b>
<b>Arm</b>	<b>m</b>	<b>2.9</b>	<b>2.9</b>	<b>3.55</b>
A Overall width of upper structure	mm	3 420	3 420	3 420
B Overall width	mm	4 290	4 290	4 290
C Overall height of cab	mm	3 520	3 520	3 520
D Tail slew radius	mm	4 140	4 140	4 140
E Overall height of air cleaner cap	mm	3 590	3 590	3 590
Overall height of engine hood	mm	3 310	3 310	3 310
F Counterweight clearance*	mm	1 507	1 507	1 507
G Tumbler length	mm	4 750	4 750	4 750
H Track length	mm	5 990	5 990	5 990
I Track gauge (extended)	mm	3 440	3 440	3 440
Track gauge (retracted)	mm	2 750	2 750	2 750
J Shoe width	mm	650	650	650
K Min. ground clearance*	mm	858	858	858
L Overall length	mm	12 200	13 320	13 220
M Overall height of boom	mm	4 855	4 660	4 600

\* With shoe grouser



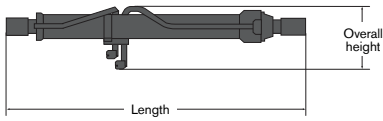
Description	Unit	EC750D		Description	Unit	EC750D	
Boom	m	6.6	7.7	Arm	m	2.9	3.55
Length (A)	mm	6 940	8 040	Length (A)	mm	4 280	4 960
Height (B)	mm	2 530	2 210	Height (B)	mm	1 530	1 410
Width	mm	1 100	1 100	Width	mm	740	740
Weight	kg	7 130	7 450	Weight	kg	4 050	4 180

\* Includes cylinder, piping and pin

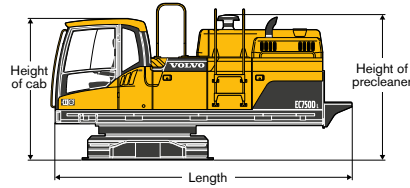
\* Includes bucket cylinder, linkage and pin

## DIMENSIONS

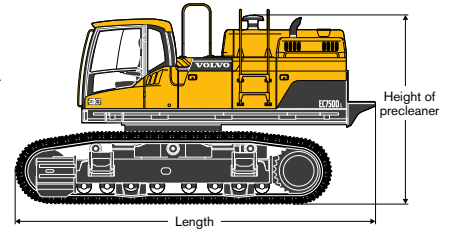
### Cylinder



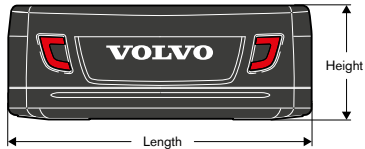
### Cab



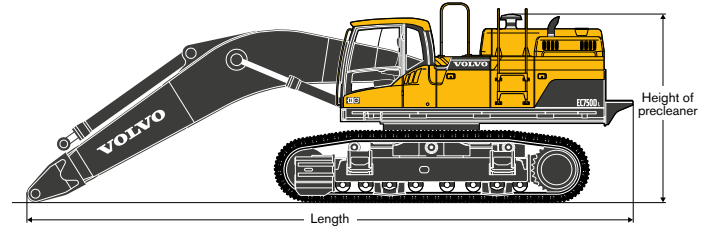
### Cab with shoes



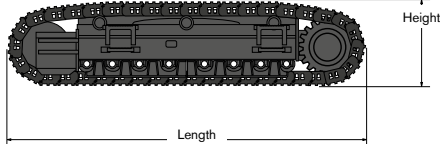
### Counterweight



### Cab with shoes and boom



### Shoes



### Cylinder

Length	Height	Width	Weight
mm	mm	mm	kg
2 525	560	370	630 x 2 set = 1 260

### Counterweight

Length	Height	Width	Weight
mm	mm	mm	kg
3 420	1 280	800	12 700

### Shoes

Shoe width	Length	Height	Overall width	Weight / unit
mm	mm	mm	mm	kg
650	5 990	1 375	1 080	10 600
750	5 990	1 375	1 080	10 950
900	5 990	1 375	1 160	11 500

### Cab

Length	Height of cab	Height of precleaner	Width	Weight
mm	mm	mm	mm	kg
5 600	2 655	2 735	3 430	22 400

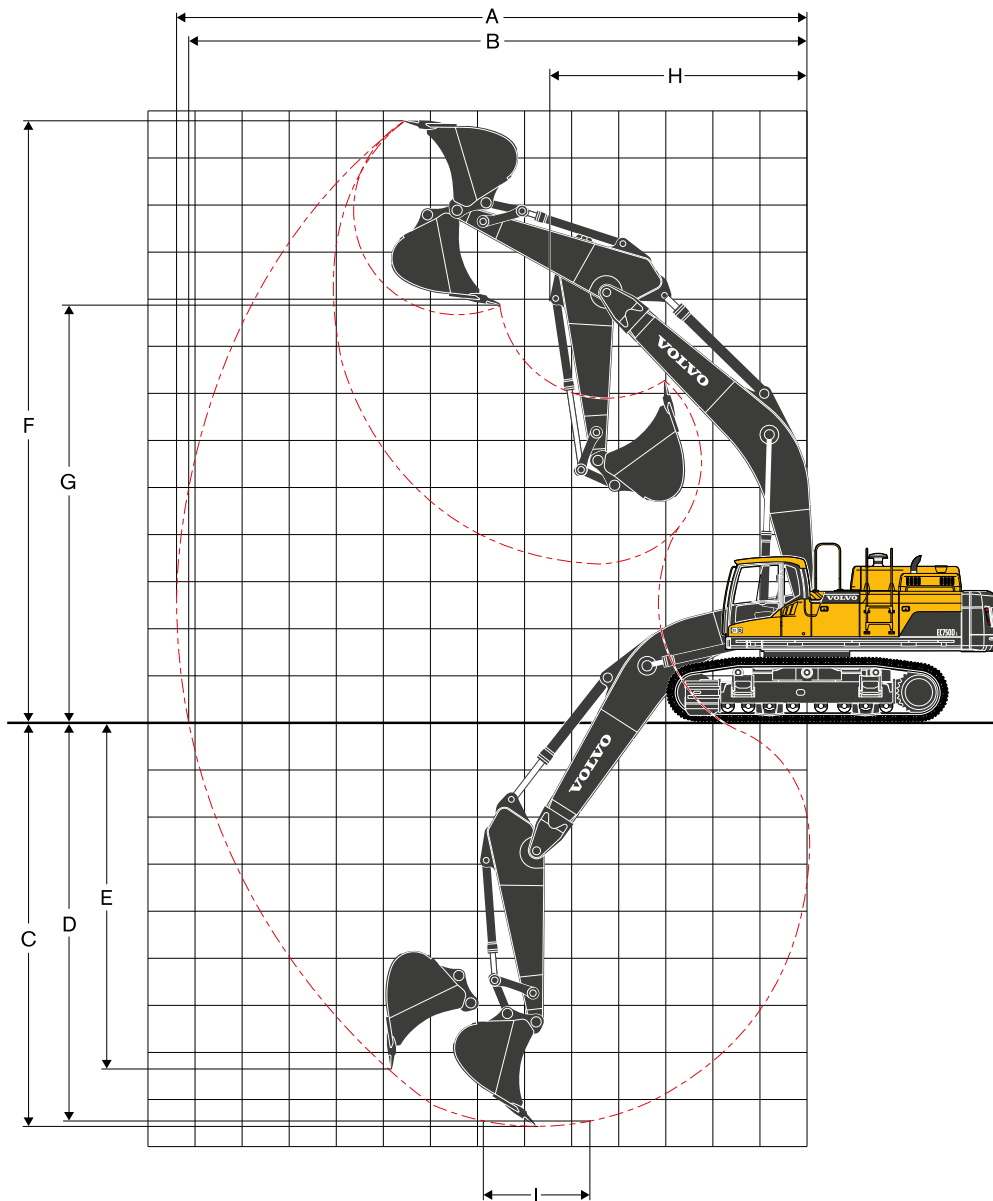
### Cab with shoes

Shoe width	Length	Height of precleaner	Overall width (retracted)	Weight
mm	mm	mm	mm	kg
650	6 830	3 590	3 495	43 600
750	6 830	3 590	3 500	44 300
900	6 830	3 590	3 650	45 400

### Cab with shoes and boom

Boom	Shoe width	Length	Height of precleaner	Overall width (retracted)	Weight
m	mm	mm	mm	mm	kg
6.6	650	10 240	3 590	3 495	51 990
	750	10 240	3 590	3 500	52 690
	900	10 240	3 590	3 650	53 790
7.7	650	11 400	3 590	3 495	52 310
	750	11 400	3 590	3 500	53 010
	900	11 400	3 590	3 650	54 110

# Specifications



## WORKING RANGES

Description	Unit	EC750D		
Boom	m	6.6	7.7	
Arm	m	2.9	2.9	3.55
A Max. digging reach	mm	11 460	12 630	13 200
B Max. digging reach on ground	mm	11 160	12 370	12 940
C Max. digging depth	mm	7 210	7 780	8 430
D Max. digging depth (l = 2.44 m level)	mm	7 060	7 640	8 300
E Max. vertical wall digging depth	mm	5 650	6 830	7 260
F Max. cutting height	mm	10 940	12 460	12 630
G Max. dumping height	mm	7 000	8 380	8 580
H Min. front swing radius	mm	5 130	5 460	5 390

## DIGGING FORCES WITH DIRECT FIT BUCKET

Bucket radius		mm	2 215	2 150	2 150
Breakout force -bucket	SAE J1179	kN	325	301	301
	ISO 6015	kN	389	356	356
Tearout force -dipper arm	SAE J1179	kN	314	316	278
	ISO 6015	kN	326	332	290
Rotation angle, bucket		°	172	173	173

## LIFTING CAPACITY EC750D

Lifting capacity at the arm end without bucket.

For lifting capacity including bucket, simply subtract actual weight of the direct fit bucket or the bucket with quick coupler from the following values.

	Lifting hook related to ground level	4.5 m		6.0 m		7.5 m		9.0 m		10.5 m		Max. reach		m		
		Along UC	Across UC	Along UC	Across UC	Along UC	Across UC	Along UC	Across UC	Along UC	Across UC	Along UC	Across UC			
Boom: 6.6m Arm: 2.9m Shoe: 650mm CWT: 12 700kg	9.0 m	kg												*15 720	*15 720	6.7
	7.5 m	kg					*16 950	*16 950						*14 600	*14 600	7.8
	6.0 m	kg			*19 480	*19 480	*17 360	*17 360						*14 250	*14 250	8.6
	4.5 m	kg	*28 900	*28 900	*21 940	*21 940	*18 480	*18 240	*16 120	14 590				*14 410	14 390	9.1
	3.0 m	kg			*24 440	*24 140	*19 740	18 830	*17 000	14 280				*15 020	13 640	9.3
	1.5 m	kg	*32 950	*32 950	*26 110	25 290	*20 670	18 230	*17 230	13 990				*16 180	13 510	9.2
	0 m	kg	*35 300	*35 300	*26 450	24 720	*20 840	17 850						*16 950	14 030	8.9
	-1.5 m	kg	*32 850	*32 850	*25 280	24 580	*19 800	17 770						*16 990	15 410	8.3
	-3.0 m	kg	*28 440	*28 440	*22 150	*22 150								*16 590	*16 590	7.4
	-4.5 m	kg	*20 640	*20 640										*14 760	*14 760	6.0
Boom: 7.7m Arm: 2.9m Shoe: 650mm CWT: 12 700kg	10.5 m	kg												*16 980	*16 980	6.8
	9.0 m	kg					*15 660	*15 660						*15 490	*15 490	8.2
	7.5 m	kg					*15 940	*15 940	*14 820	*14 580				*14 710	*14 200	9.2
	6.0 m	kg			*20 130	*20 130	*16 910	*16 910	*15 040	14 590				*14 420	12 440	9.9
	4.5 m	kg			*22 670	*22 670	*18 180	*17 900	*15 610	14 160				*14 230	11 440	10.2
	3.0 m	kg			*24 740	*24 340	*19 350	17 860	*16 190	13 700				*14 140	10 940	10.4
	1.5 m	kg			*25 550	23 730	*20 030	17 250	*16 520	13 330				*14 070	10 850	10.4
	0 m	kg			*25 100	23 390	*19 990	16 900	*16 360	13 110				*13 960	11 180	10.1
	-1.5 m	kg	*27 460	*27 460	*23 610	*23 170	*19 070	16 830	*15 380	13 090				*13 720	12 020	9.6
	-3.0 m	kg	*25 020	*25 020	*20 970	*20 970	*16 970	*16 620						*13 120	*12 800	8.8
-4.5 m	kg	*19 620	*19 620	*16 580	*16 580	*12 410	*12 410						*11 670	*11 670	7.7	
Boom: 7.7m Arm: 3.55m Shoe: 650mm CWT: 12 700kg	10.5 m	kg												*13 600	*13 600	7.6
	9.0 m	kg					*14 930	*14 930	*13 860	*13 860				*12 490	*12 490	8.9
	7.5 m	kg					*16 020	*16 020	*14 310	*14 020				*11 990	*11 990	9.8
	6.0 m	kg			*18 820	*18 820	*16 020	*16 020	*15 030	14 300	*13 500	11 140		*11 990	10 530	10.8
	4.5 m	kg			*21 490	*21 490	*17 430	*17 430	*15 780	13 790	*13 780	10 880		*12 380	10 080	11.0
	3.0 m	kg			*23 900	*23 420	*18 790	18 070	*16 190	13 840	*13 840	10 650		*12 890	9 980	10.9
	1.5 m	kg			*25 290	23 950	*19 750	17 350	*16 310	13 350	*13 920	10 650		*12 890	9 980	10.9
	0 m	kg			*25 440	23 380	*20 050	16 890	*16 430	13 040	*13 650	10 510		*13 220	10 220	10.7
	-1.5 m	kg	*28 090	*28 090	*24 470	23 230	*19 540	16 690	*15 890	12 920				*13 130	10 890	10.2
	-3.0 m	kg	*27 750	*27 750	*22 370	*21 830	*18 010	16 760	*14 250	13 040				*12 830	12 190	9.5
-4.5 m	kg	*22 930	*22 930	*18 810	*18 810	*14 870	*14 870						*12 000	*12 000	8.4	
-6.0 m	kg	*15 520	*15 520	*12 510	*12 510								*9 780	*9 780	6.9	
Boom: 6.6m Arm: 2.9m Shoe: 750mm CWT: 12 700kg	9.0 m	kg												*15 720	*15 720	6.7
	7.5 m	kg					*16 950	*16 950						*14 600	*14 600	7.8
	6.0 m	kg			*19 480	*19 480	*17 360	*17 360						*14 250	*14 250	8.6
	4.5 m	kg	*28 900	*28 900	*21 940	*21 940	*18 480	*18 240	*16 120	14 720				*14 410	*14 410	9.1
	3.0 m	kg			*24 440	*24 140	*19 740	19 000	*17 000	14 420				*15 020	13 770	9.3
	1.5 m	kg	*32 950	*32 950	*26 110	25 530	*20 670	18 400	*17 230	14 130				*16 180	13 640	9.2
	0 m	kg	*35 300	*35 300	*26 450	24 960	*20 840	18 020						*16 950	14 160	8.9
	-1.5 m	kg	*32 850	*32 850	*25 280	24 820	*19 800	17 940						*16 990	15 560	8.3
	-3.0 m	kg	*28 440	*28 440	*22 150	*22 150								*16 590	*16 590	7.4
	-4.5 m	kg	*20 640	*20 640										*14 760	*14 760	6.0
Boom: 7.7m Arm: 2.9m Shoe: 750mm CWT: 12 700kg	10.5 m	kg												*16 980	*16 980	6.8
	9.0 m	kg					*15 660	*15 660						*15 490	*15 490	8.2
	7.5 m	kg					*15 940	*15 940	*14 820	*14 580				*14 710	*14 340	9.2
	6.0 m	kg			*20 130	*20 130	*16 910	*16 910	*15 040	14 720				*14 420	12 570	9.9
	4.5 m	kg			*22 670	*22 670	*18 180	*17 900	*15 610	14 290				*14 230	11 560	10.3
	3.0 m	kg			*24 740	*24 340	*19 350	18 040	*16 190	13 840				*14 140	11 050	10.4
	1.5 m	kg			*25 550	23 970	*20 030	17 420	*16 520	13 470				*14 070	10 960	10.4
	0 m	kg			*25 100	23 630	*19 990	17 080	*16 360	13 250				*13 960	11 290	10.1
	-1.5 m	kg	*27 460	*27 460	*23 610	*23 170	*19 070	17 000	*15 380	13 230				*13 720	12 150	9.6
	-3.0 m	kg	*25 020	*25 020	*20 970	*20 970	*16 970	*16 620						*13 120	*12 800	8.8
-4.5 m	kg	*19 620	*19 620	*16 580	*16 580	*12 410	*12 410						*11 670	*11 670	7.7	
Boom: 7.7m Arm: 3.55m Shoe: 750mm CWT: 12 700kg	10.5 m	kg												*13 600	*13 600	7.6
	9.0 m	kg					*14 970	*14 970	*13 890	*13 890				*12 490	*12 490	8.9
	7.5 m	kg					*16 060	*16 060	*14 350	*14 020				*11 990	*11 990	9.8
	6.0 m	kg			*18 860	*18 860	*16 060	*16 060	*15 070	14 430	*13 540	11 250		*11 840	11 500	10.5
	4.5 m	kg			*21 520	*21 520	*17 470	*17 470	*15 780	14 300	*13 820	11 000		*11 990	10 640	10.8
	3.0 m	kg			*23 930	*23 420	*18 830	18 240	*15 810	13 920	*13 820	11 000		*12 380	10 190	11.0
	1.5 m	kg			*25 320	24 190	*19 780	17 520	*16 350	13 480	*13 950	10 760		*12 890	10 090	11.0
	0 m	kg			*25 470	23 620	*20 080	17 060	*16 470	13 180	*13 680	10 620		*13 260	10 330	10.7
	-1.5 m	kg	*28 090	*28 090	*24 500	23 460	*19 570	16 870	*15 930	13 060				*13 170	11 000	10.2
	-3.0 m	kg	*27 790	*27 790	*22 410	*21 830	*18 040	16 940	*14 290	13 170				*12 860	12 310	9.5
-4.5 m	kg	*22 960	*22 960	*18 840	*18 840	*14 910	*14 910						*12 030	*12 030	8.4	
-6.0 m	kg	*15 550	*15 550	*12 550	*12 550								*9 820	*9 820	6.9	
Boom: 6.6m Arm: 2.9m Shoe: 900mm CWT: 12 700kg	9.0 m	kg												*15 720	*15 720	6.7
	7.5 m	kg					*16 950	*16 950						*14 600	*14 600	7.8
	6.0 m	kg			*19 480	*19 480	*17 360	*17 360						*14 250	*14 250	8.6
	4.5 m	kg	*28 900	*28 900	*21 940	*21 940	*18 480	*18 240	*16 120	14 930				*14 410	*14 410	9.1
	3.0 m	kg			*24 440	*24 440	*19 740	19 260	*17 000	14 620				*15 020	13 970	9.3
	1.5 m	kg	*32 950	*32 950	*26 110	*25 770	*20 670	18 660	*17 230	14 330				*16 180	13 840	9.2
	0 m	kg	*35 300	*35 300	*26 450	25 310	*20 840	18 280						*16 950	14 370	8.9
	-1.5 m	kg	*32 850	*32 850	*25 280	*24 920	*19 800	18 200						*16 990	15 790	8.3
	-3.0 m	kg	*28 440	*28 440	*22 150	*22 150								*16 590	*16 590	7.4
	-4.5 m	kg	*20 640	*20 640										*14 760	*14 760	6.0
Boom: 7.7m Arm: 2.9m Shoe: 900mm CWT: 12 700kg	10.5 m	kg												*16 980	*16 980	6.8
	9.0 m	kg					*15 660	*15 660								

# Equipment

## STANDARD EQUIPMENT

### Engine

Turbocharged, 4 stroke diesel engine with water cooling, direct injection and charged air cooler

Air filter with indicator

Air intake heater

Cyclone pre-cleaner

Electric engine shut-off

Fuel filter and water separator

Alternator, 80 A

Fuel filler pump, 100 lpm with automatic shut-off

### Electric/Electronic control system

Contronics

Advanced mode control system

Self-diagnostic system

Machine status indication

Engine speed sensing power control

Emergency engine stop switch

Automatic idling system

Safety stop/start function

Adjustable LCD color monitor

Master electrical disconnect switch

Engine restart prevention circuit

High-capacity halogen lights:

Cab-mounted 2

Frame-mounted 1

Boom-mounted 4

Batteries, 2 x 12 V / 210 Ah

Start motor, 28 V / 6.6 kW

### Hydraulic system

Automatic sensing hydraulic system

Summation system

Boom priority

Arm priority

Swing priority

ECO mode fuel saving technology

Boom and arm regeneration valves

Swing anti-rebound valves

Boom and arm holding valves

Multi-stage filtering system

Cylinder cushioning

Cylinder contamination seals

Auxiliary hydraulic valve

Automatic two-speed travel motors

Hydraulic oil, ISO VG 46

### Frame

Access way with handrail

Full height counterweight 12 700kg

Tool storage area

Side walk-way

Under cover (heavy duty 4.5mm)

Punched metal anti-slip plates

### Cab and interior

Silicon oil and rubber mounts with spring

Adjustable operator seat with heater and joystick control console

Control joysticks with semi-long

Heater & air-conditioner, automatic

Flexible antenna

Radio with CD player & MP3 player and USB

Hydraulic safety lock lever

Cab, all-weather sound suppressed, includes:

Cup holders

Door locks

Tinted glass

Floor mat

Horn

Large storage area

Pull-up type front window

Removable lower windshield

Seat belt

Safety glass

Sun screens, front, roof, rear

Windshield wiper with intermittent feature

Master key

### Undercarriage

Mechanically retractable track gauge

Hydraulic track adjusters

Greased and sealed track link

Track Guard

Under cover (10mm)

### Track shoes

Track shoes, 650 mm with double grouser

### Digging equipment

Boom: ME 6.6 m

Arm: ME 2.9 m

Manual centralized lubrication

## OPTIONAL EQUIPMENT

### Engine

Block heater: 240 V

Dual stage oil bath pre-cleaner

Diesel coolant heater, 10 kW

Water separator with heater

Extra water separator

Auto engine shutdown

### Electric

Extra lights :

Cab-mounted 3 (front 2, rear 1)

Boom-mounted 4

Frame-mounted 1

Counterweight-mounted 1

Travel alarm

Anti-theft system

Rotating warning beacon

## OPTIONAL EQUIPMENT

### Hydraulic system

Hose rupture valve: boom, arm
Straight travel pedal
Bucket conflux
Boom float function with HRV
Boom float function without HRV
Hydraulic piping:
Work tool management system (up to 20 programmable memories)
Hammer & shear, 1 and 2 pump flow
Hammer & shear: variable flow and pressure pre-setting
Additional return filter
Slope & rotator
Grapple
Quick coupler piping
Volvo hydraulic quick coupler EQD FPL Eye 75t_C
Hydraulic oil, ISO VG 32, 68
Hydraulic oil, biodegradable 46
Hydraulic oil, longlife oil 32, 46, 68

### Cab and interior

One-piece fixed front windshield
Fabric seat without heater
Fabric seat with heater and air suspension
Control joysticks with 4 switches each
Control joysticks with 3 switch & 1 proportional
Opening top hatch
Front rain shield

### Cab and interior

Falling object guard (FOG)
Frame-mounted
Cab-mounted
Cab-mounted falling object protective structure (FOPS)
Smoker kit (ashtray and lighter)
Safety net for front window
Sunlight protection, roof (steel)
Lower wiper with intermittent control
Cleaning air gun
Rear view camera
Side view camera
Specific key

### Frame

Full height counterweight:
12 700kg removal type

### Undercarriage

Full track guard
------------------

### Track shoes

750/900mm track shoes with double grousers
--

### Digging equipment

Boom: 7.7m
Arm: 2.9m, 3.55m

### Service

Tool kit, daily maintenance
Tool kit, full scale
Special tool for retractable frame

## SELECTION OF VOLVO OPTIONAL EQUIPMENT

### Dual stage oil bath pre-cleaner



### FOPS/FOG

(Falling object protection system/Falling object guard)



### Boom float



### Bucket conflux



### Side-view camera



### One-piece fixed windshield



Not all products are available in all markets. Under our policy of continuous improvement, we reserve the right to change specifications and design without prior notice. The illustrations do not necessarily show the standard version of the machine.



**VOLVO**

Volvo Construction Equipment

[www.volvoce.com](http://www.volvoce.com)